

CATIA V5 Student Edition

User Guide 

academy.3ds.com



**3DS
ACADEMY**

 **DASSAULT
SYSTEMES**

Version 2.0 - 12/19/2016
Written by: The 3DS Academy Team

ORDERING AND INSTALLATION PROCESSES

CATIA V5 Student Edition

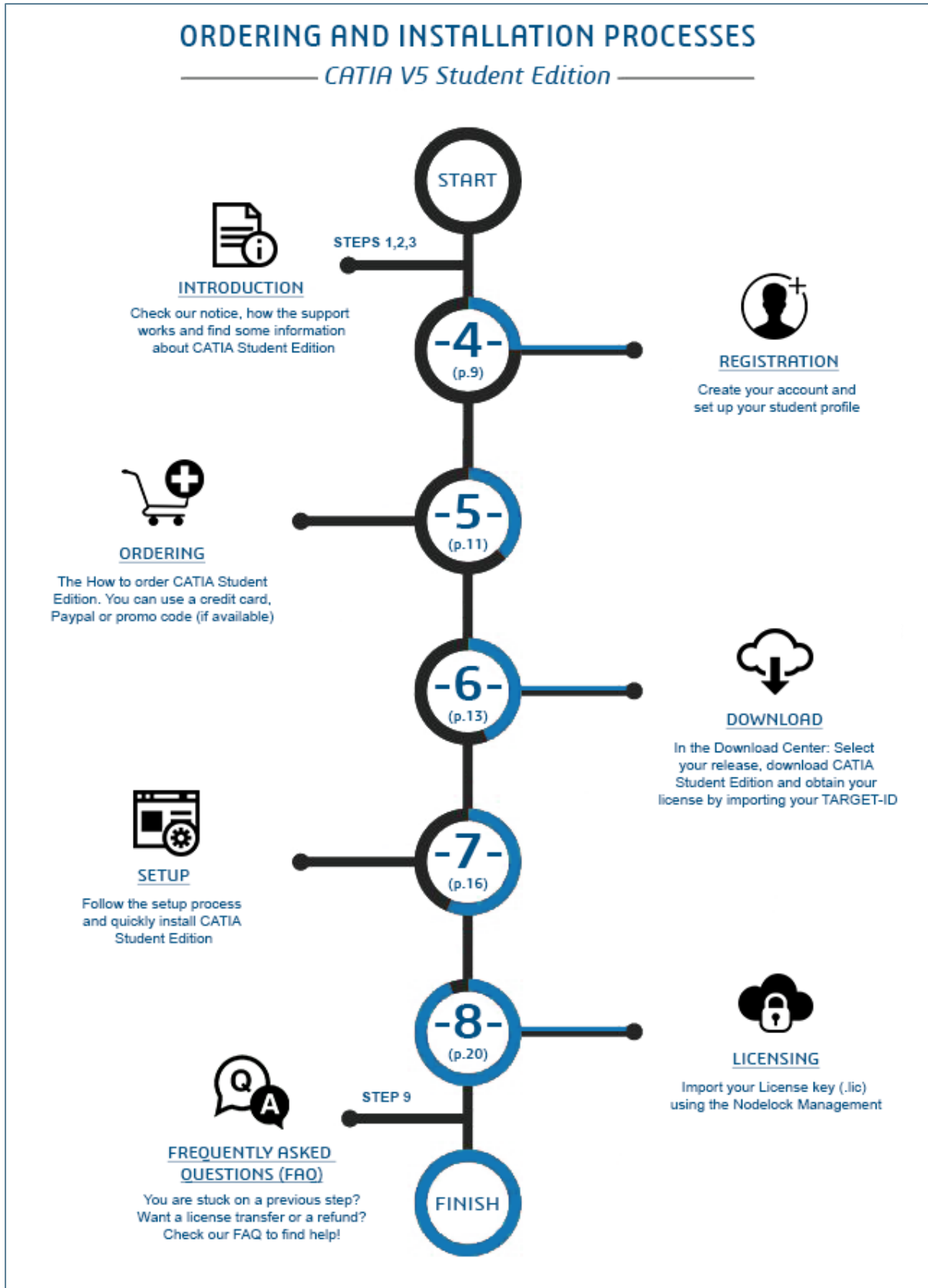


Table of contents

1. NOTICE	5
2. SUPPORT	5
3. PREREQUISITES	6
A. Differences between CATIA V5 Student Edition and the "commercial" version	6
B. Included Workbenches	6
C. Available CATIA Student releases	8
D. End User Agreement	8
4. REGISTRATION	9
5. ORDERING	11
6. DOWNLOAD	13
A. Target ID generation	14
1) What is a Target ID?	14
2) Target ID Generator	14
3) Download the generator	14
4) Run the generator	15
7. SETUP	16
1) Download and unzip the zip files	16
2) Welcome screen	16
3) License	17
4) Installation Directory	17
5) Environment	18
6) Setup type	18
7) Press Next until you get a recap	19
8) Installation in progress	19
8. LICENSING	20
9. FREQUENTLY ASKED QUESTIONS (FAQ)	22
A. Registration and Ordering	22
1) In which countries is CATIA V5 Student Edition available?	22
2) What are the conditions for eligibility?	22
3) How long does it take to get approved?	22
4) Which proofs of academic status are requested to apply for CATIA Student Edition?	22
5) What is the license duration?	23
6) What is a promo code?	23

7) Which payment method can I use to purchase CATIA Student Edition?.....	23
8) How to determine if my operating system is 32 or 64-bit?	23
9) I didn't receive the license key by email	24
B. Request a refund	24
C. Request a License transfer (changing computers).....	25
D. Account and Download Center.....	26
1) How to access to your account.....	26
2) How to reset my profile password?	26
3) I need an invoice (billing).....	27
4) I have the error "ACADEMAP TECHNICAL ERROR Your school email is already used to validate another account".....	27
5) I have misspelled my email when registering	28
6) Order delayed : need more information (by email, order in hold)	28
7) How to download the software later or change your release	29
E. Installation and TARGET-ID	29
1) Error: "setup Problem with VC8 Runtime. Please try to restart your computer or contact customer service".....	29
2) CATIA title bar show "CATIA V5 DEMONSTRATION"?	30
3) You cannot find Nodelock Key Management.....	31
4) No license found in nodelock file	31
5) License not imported. Initial license already present	31
6) Requested Product not found: XXX.prd or XXX.slt	32
7) You have imported your license but can't see it in Nodelock or have the following issues: "No license server declared" or "Failed to open local license file".....	33
8) Nodelock management requires write rights on Nodelock file	34
9) Invalid Timestamp Error	36
10) You have not requested a configuration or product license	36
11) No license available for requested configuration – configuration not granted	38
12) My Target ID is 00000000	39

1. NOTICE

This guide has been written by the Dassault Systèmes Academia Department to help students order and install **CATIA Student Edition**.

It not only proposes step by step instructions but also includes frequently asked questions and troubleshooting sections inspired by the CATIA Student Edition online community (see below). References to community questions and posts are shown in grey.

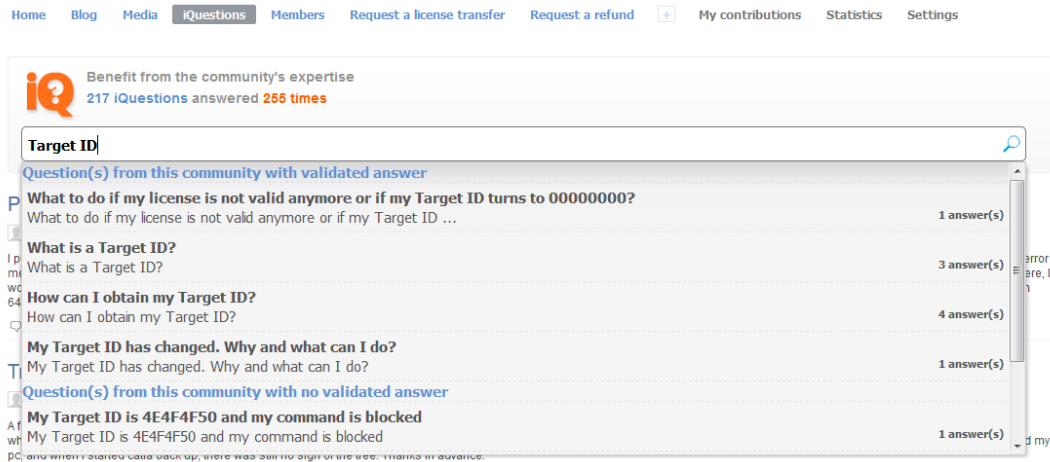
This guide MUST NOT be used by commercial customers, should they be academic institutions of industrial customers.

2. SUPPORT

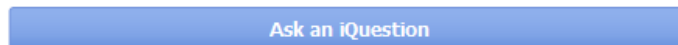
Support is limited to the purchase and installation phases. Should you have any question, please use the CATIA Student Edition support community at:

<https://swym.3ds.com/#community:514>

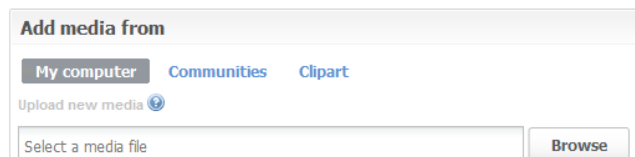
Answers to frequently asked questions can be found under the iQuestion tab. You may check the FAQ by entering a few words in the text field:



Should you want to ask a question, press the “Ask an iQuestion” button on the right hand side.



Please provide us with as many details as possible to help us answer your question as rapidly as possible. Screenshots are extremely helpful for us. You may attach screen captures by using the “Add media from” panel on the right:



3. PREREQUISITES

CATIA V5 Student Edition exclusively runs on Microsoft Windows. Some users reported it also works on MacOS but please note we don't provide support in such case.

A network adapter, preferably an Ethernet one, is required as well as a recent 3D graphic card.

Dassault Systèmes provides a list of officially certified configurations but they are often unaffordable for students: <http://www.3ds.com/support/certified-hardware>

However, CATIA Student Edition is known for working well with most recent and decent PCs.

Notes:

- CATIA Student Edition isn't certified on Windows 7 32-bit.
- CATIA Student Edition isn't certified on Windows 8 and Windows 10 but some students reported it works well
NB: Windows 10 will be certified soon on further CATIA V5 Student Edition releases
- ATI Radeon graphic cards are not supported. CATIA Student Edition will not work with this GPU.

A. Differences between CATIA V5 Student Edition and the "commercial" version

There is no major difference between **CATIA V5 Student Edition** and its corresponding commercial license. From a capacity point of view, they are identical but produced parts and products are watermarked, so they cannot be used with a commercial license.

B. Included Workbenches

CATIA Student Edition isn't an all-in-one version. It includes a set of mechanical design-oriented workbenches:

- 3 Axis Surface Machining 2 (SMG) -- Easily defines 3-axis milling and drilling operations.
- Part Design (PDG) –Helps to design complex parts with highly productive and robust modeling features in an intuitive environment.
- Assembly Design 2 (ASD) -- Easily defines mechanical assembly constraints automatically positions parts and checks assembly consistency
- Generative Drafting 2 (GDR) --Generates drawings from 3D parts and assembly designs with assistance to manage complex schema.
- Interactive Drafting 1 (ID1) -- Addresses 2D design drawing production requirement

- Functional Molded Part (FMP) – Is a new generation product for designing cast, molded and forged parts and related tooling with unmatched productivity and flexibility.
- Structure Design 1 (SR1) –Helps to rapidly design structures using catalogues of standard or custom sections. SR1 enables to simply and quickly creates linear, curved structures, and plates, using standard or user-defined sections. Taking advantage of an optimized user interface, the user can easily create and modify structures thanks to fully associative design in context capability.
- Sheetmetal Design (SMD) – Helps to design sheet metal parts in a very intuitive and productive environment.
- Real Time Rendering 2 (RTR) --Enables designers to interactively create realistic and dynamic renderings and animations in real-time, by extensively using all the hardware features available.
- Generative Shape Design (GSD) -- Helps to design advanced shapes that are based on a combination of wireframe and extensive multiple surfaces. It includes high-level features with full specification capture and reuse.
- Imagine and Shape (IMA) -- Enables designers and engineers to quickly, intuitively, transform a shape idea into a 3D geometric model. Probably one of students' favorite applications!
- DMU Kinematics Simulator (KIN) -- Defines, simulates, and analyzes mechanisms for digital mock-ups of all sizes.
- Photo Studio (PHS) -- Generates high quality photo-realistic images and movies of a digital mock-up, by using a powerful ray-tracing engine.
- Photo Studio Optimizer (PHO) -- Is an essential complement to Photo Studio for users who want to create images and movies that will match reality. PSO extends PHS's rendering capabilities with such advanced technologies as global illumination and caustics.
- Freestyle Sketch Tracer (FSK) -- Allows the integration of stylists' work (such as 2D painting) into a 3D format, as the basis for 3D virtual mock-ups.
- Freestyle Shaper 2 (FSS) -- Provides powerful easy-to-use surface-based tools to help designers create styled shapes, enabling even casual users to easily smooth and trim curves and surfaces.

And also...

DMU Space Analysis 2 (SPA), Plant Layout 1 (PLO), Generative Part Structural Analysis 2 (GPS), NC Manufacturing Review 2 (NCG), Prismatic Machining 2 (PMG), Lathe Machining 2 (LMG), STL Rapid Prototyping (TL1), Object Manager 2 (COM), Instant Collaborative Design 1 (CD1), IGES Interface 1 (IG1).

<https://swym.3ds.com/#community:514/iquestions:11835>

C. Available CATIA Student releases

You can find below the official life cycle dates for each CATIA Student releases.

Release	Release date	Full support end
V5R20	19-Feb-10	19-Oct-12
V5R21	17-Jun-11	17-Feb-14
V5-6R2012	17-Feb-12	17-Oct-14
V5-6R2013	15-Feb-13	15-Oct-15
V5-6R2014	7-Mar-14	7-Nov-16
V5-6R2015	13-Mar-15	13-Nov-17
V5-6R2016	1-Nov-16	4-Oct-18

<https://swym.3ds.com/#post:17340>

D. End User Agreement

The Student License Agreement sets some usages for CATIA Student Edition. In particular:

- You must install the software on a computer owned or/and leased by you [...] identified in the order, placed by you by type, serial number, target ID and installation address. (article 1)
- [You must be] a natural person (i) regularly enrolled as a student in an academic program, (ii) holding a valid registration receipt for the current semester or a valid letter of enrollment on school letterhead for the current year (iii) who is registered on 3DS Academy. (article 1)
- CATIA V5 may only be operated by you, on your personal computer and only for your individual, personal and non-commercial learning, academic and/or research purposes, excluding any other purposes such as but without limitation any direct or indirect industrial, commercial and/or business purposes. (article 2)

4. REGISTRATION

To apply, please follow the steps shown on the following video:

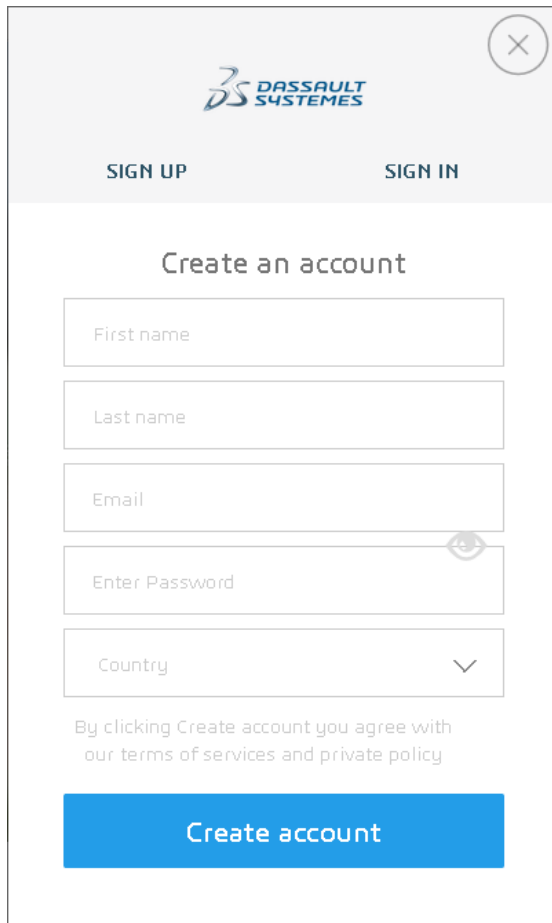
There are two ways to register, both lead to the same end.

You can complete the full registration (a) and buying processes directly or can create a 3DS public profile (b) and finish your academic registration later.

The full registration path is: go to [CATIA V5 Student Edition page](#) and click on “BUY NOW” (same process for [ICEM Surf Student Edition](#))

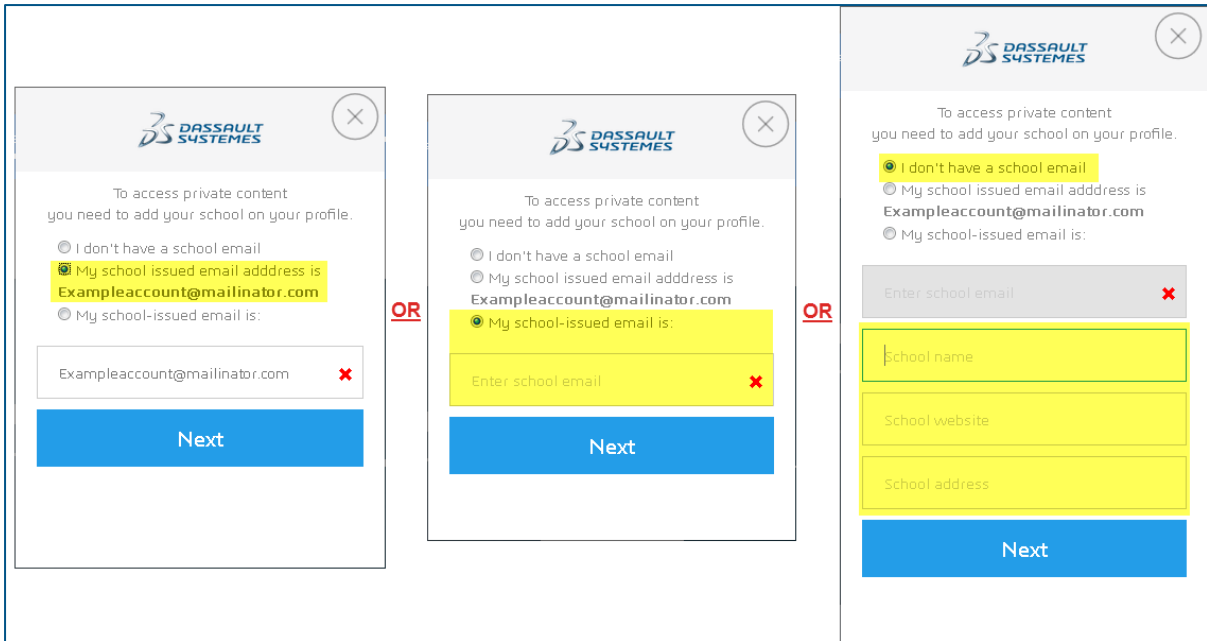
A pop-in will open, choose Sign-up and fill the form, then click on “Create account”:

Note: you can directly use your academic email address to create your account, it's the fastest and easiest method to get your student account validated later.



The image shows a registration form for 3DS Dassault Systèmes. At the top, there is a header with the 3DS logo and the text 'DASSAULT SYSTEMES'. Below the header, there are two buttons: 'SIGN UP' and 'SIGN IN'. The main heading of the form is 'Create an account'. The form contains several input fields: 'First name', 'Last name', 'Email', 'Enter Password' (with a visibility toggle icon), and 'Country' (with a dropdown arrow). Below the input fields, there is a line of text: 'By clicking Create account you agree with our terms of services and private policy'. At the bottom of the form, there is a large blue button labeled 'Create account'.

Once this account created (the public profile), you **have to confirm your academic status**. To do so, click on Student (if you don't see it, you are automatically entered in the student process) and fill the required information: to confirm your student status, you can use either your academic email address or a proof of Student status (as explained in the FAQ: in registration).



3 options are available:

- 1/ You have already used your academic email address, then click on Next
- 2/ You registered with a personal email address, add your academic email address to confirm your status by clicking on “My school-issues email is:” and type your email > Next
- 3/ You don’t have an academic email address, in that case, fill the information, click on Next and then choose your University in the list and ad your Academic ID proof (your request will be reviewed shortly after).

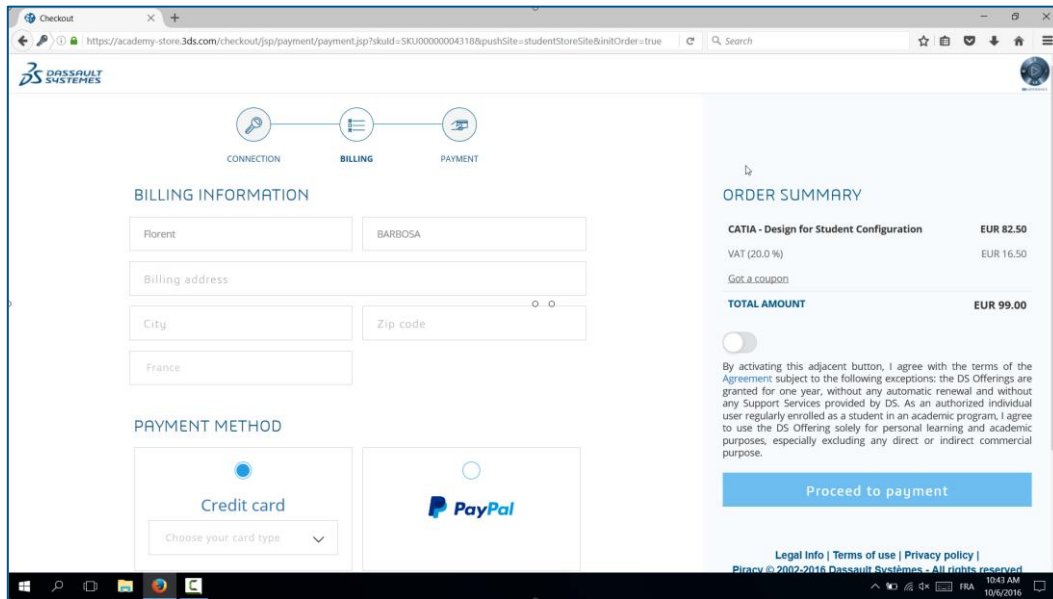
Note: To create a 3DS public profile, you can also click on the CONNECT button at the top of the page and “Sign Up”. Fill up the form and confirm to create the account.

Please note that this profile still needs the academic approval (student/teacher), to confirm your student status, you will have to go to the CATIA V5 Student Edition page and click on buy to activate the academic approval process.

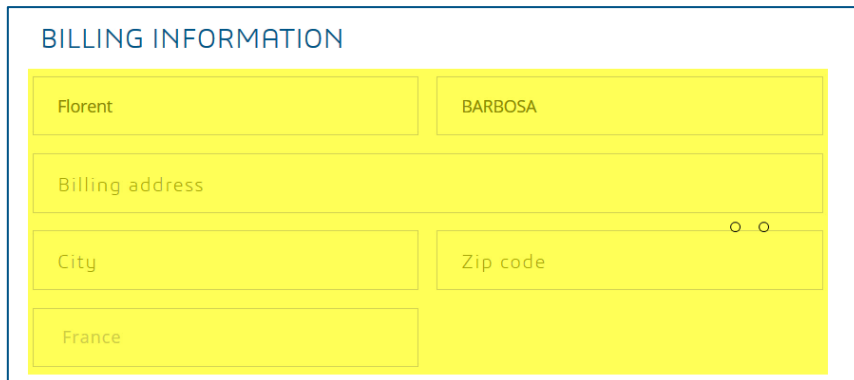
If you need more help, don’t hesitate to ask your question on our SwYm’ Community.

5. ORDERING

You are now on the “BILLING” page. To order, please follow the steps shown below:

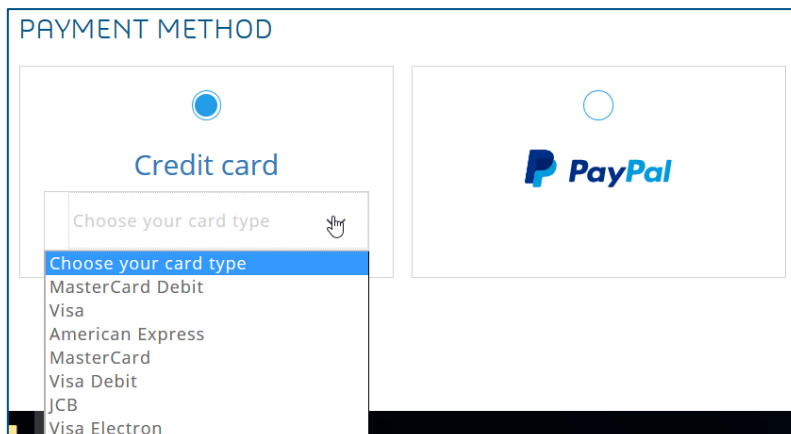


1/ Fill your Billing Information: First name, last name, billing address, City, Zip Code



2/ Choose your Payment Method


→ You can pay with PayPal or by Credit Card: click to choose and follow the process (you will have to login to PayPal if you want to use this payment method).



3/ On the right, in “ORDER SUMMARY”, read and approve the conditions (conditions of sales & license agreement) and click on the button to approve them.

ORDER SUMMARY

CATIA - Design for Student Configuration	EUR 82.50
VAT (20.0 %)	EUR 16.50
Got a coupon/ promo-code	
TOTAL AMOUNT	EUR 99.00



By activating this adjacent button, I agree with the terms of the [Agreement](#) subject to the following exceptions: the DS Offerings are granted for one year, without any automatic renewal and without any Support Services provided by DS. As an authorized individual user regularly enrolled as a student in an academic program, I agree to use the DS Offering solely for personal learning and academic purposes, especially excluding any direct or indirect commercial purpose.

[Proceed to payment](#)

Note: If you have a promo code, you can click on “Got a coupon/promo-code”. Otherwise, leave this field empty

4/ Click on “Proceed to payment” to confirm your order.

Your order is now approved, you can go to your Download Center and follow the next step.

Thank you for your order

Start using your software now.

[Download center](#)

Once your payment is completed on credit card or Paypal, it will take a few minutes (between 5 and 30 minutes) for our servers to process it. Please be patient and do not order again. Should you need assistance, please open an iQuestion.

Note: you cannot purchase multiple times the same software but there is no downloading restriction (you can download the software as much as you want) in the Download Center (see 9.FAQ > D.7 How to download the software later or change your release).

6. DOWNLOAD

When your order will be completed, you will receive an **email** from dsstore@3dstore.com which is a receipt of your order. The next steps are also explained in it:

1/ Go To your Download Center **2/** Download your Software **3/** Generate a license for your computer **4/** Install the license into your computer.

Once read, click on the **DOWNLOAD**  button to access to your Download Center.

- In your Download Center, 2 tabs are available:

→ Instructions: contains CATIA installation files and full installation process explanation

→ Additional Media: contains the CATIA HTML documentation








(DOC_CATIA_STUDENT.media.1-1.zip)

- To install CATIA Student Edition, go to **Instructions** and follow the steps mentioned:

→ **Step 1** - Download the software and select the correct release

Note: The files mentioned with "Windows 64" are the 64-bits installers.

Download the installer which corresponds to your operating system.

	64 bits in yellow, 32bits in pink	
V5-6R2016	 CATIA Student Windows 64 V5-6R2016 Golden	
V5-6R2015	 CATIA Student Windows V5-6R2015 Golden	 CATIA Student Windows 64 V5-6R2015 Golden
V5-6R2013	 CATIA Student Windows V5-6R2013 Golden	 CATIA Student Windows 64 V5-6R2013 Golden
V5-6R2014	 CATIA Student Windows V5-6R2014 Golden	 CATIA Student Windows 64 V5-6R2014 Golden

→ **Step 2** - Generate a license for your computer

*(more information about this step in the next paragraph **A. Target ID generation**)*

A - Download the "TARGET-ID Generator" Program

B - Once your TARGET-ID obtained, please paste it on the following box to generate a license key for your computer.

→ **Step 3** - Install your CATIA - Design for Student Configuration

*(more information about this step in the paragraph **7. SETUP**)*

A - Install CATIA - Design for Student Configuration

B - Import your license key (.lic file) using the "Nodelock Key Management", this program installed with CATIA is available in your start menu or by using the Windows search tool
*(more information about this step in the paragraph **8. LICENSING**)*

If you ever delete the email message by mistake, you may visit <https://academy-store.3ds.com/myaccount/jsp/download/download-center.jsp>

<https://swym.3ds.com/#community:514/questions:11919>

A. Target ID generation

At step 2 of the installation process, you will be asked to provide a Target ID. This is the trickiest part of the CATIA installation.

1) [What is a Target ID?](#)

The "Target ID" is a code calculated on your computer. It identifies your computer and it is used to generate your license key.

The calculation of the Target ID has to be performed on the computer where CATIA Student Edition will be used.

<https://swym.3ds.com/#community:514/questions:11812>

2) [Target ID Generator](#)

To determine your Target ID, you will use the "TARGET-ID Generator for students" (also known as "TIGER").

The Target ID Generator aims at making students life easier. It is not officially supported by Dassault Systèmes and must NOT be used by commercial customers.

This small application automatically runs complex command lines to make sure the Target ID you'll get will be valid and won't ever change. Also, it will set one Windows environment variable.

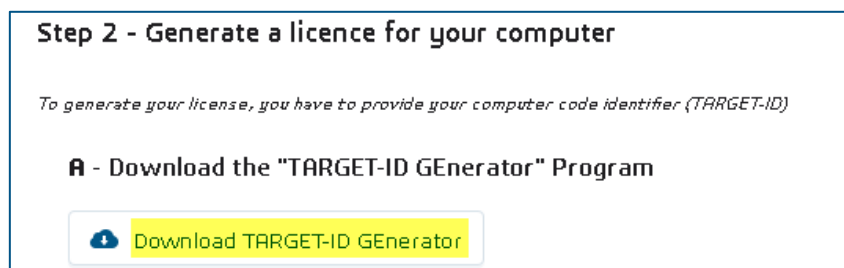
<https://swym.3ds.com/#post:13884>

3) [Download the generator](#)

Download the following file and extract it in a temporary directory (your Windows desktop or download folder for example):

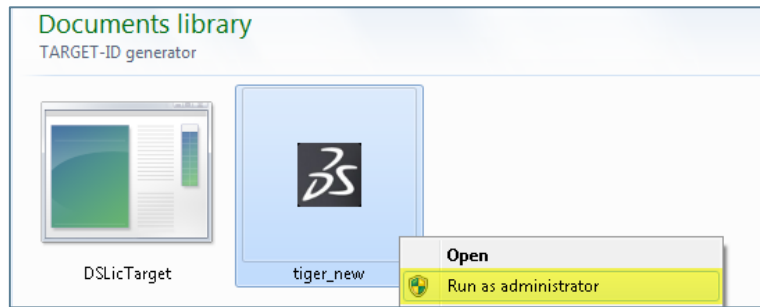
<http://www.3ds.com/fileadmin/general/Terms/Software keys/TARGET-ID generator.zip>

→ You can also download the TARGET-ID Generator directly in your Download Center (in the installation steps of the software)

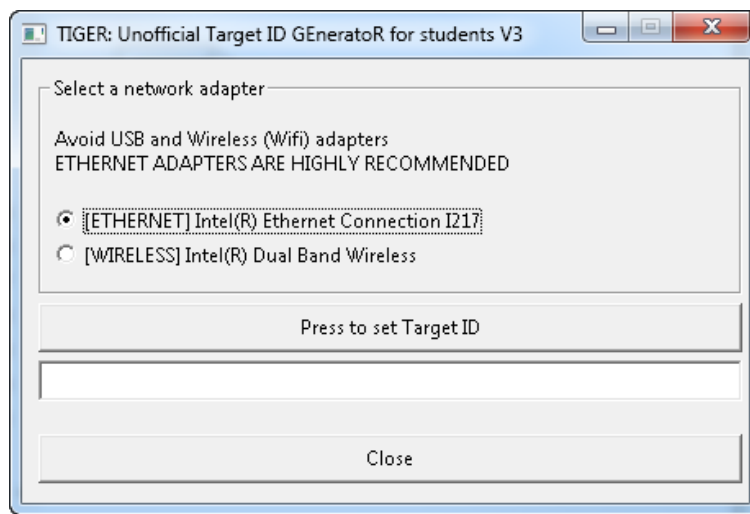


4) Run the generator

Right-click on “tiger_new.exe” and select “Run as administrator”:

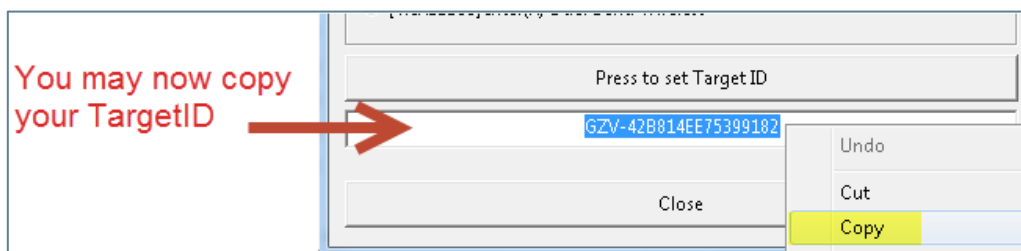


Select your **Ethernet** adapter:



Press the button located under the adapter list. Your Target ID will appear in the text field. The Target ID looks like a 20-character code linked to your CATIA V5 release (for example: DMX-430B10DEF171774F, GZV-42B814EE75399182).

NB: Once the code generated, a log file is also created in the same folder



→ You may now copy it and paste it in the online order form.

→ Click on “Activate my Computer” to create the license file (.lic) which will be sent by email shortly after

B - Once your TARGET-ID obtained, please paste it on the following box to generate a license key for your computer.

After clicking on "activate my computer" you will instantly receive an email

Past generated Target ID here

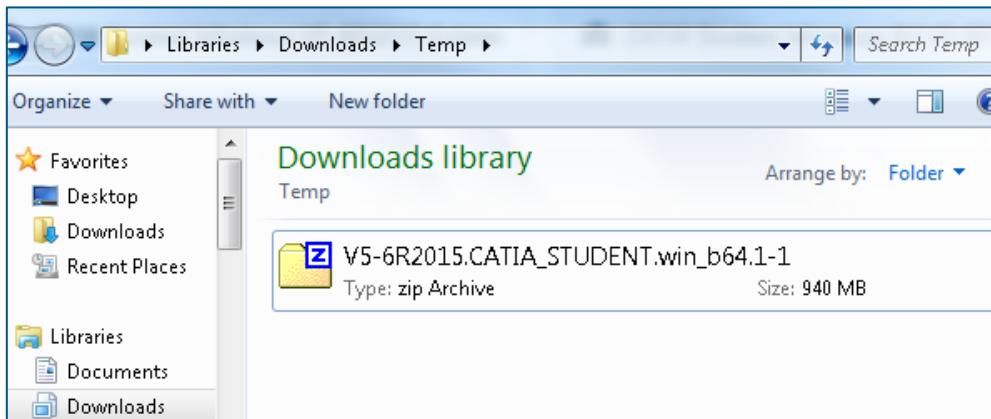
7. SETUP

→ Find below the Installation steps:

1) [Download and unzip the zip files](#)

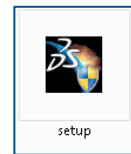
Download the zip file in a temporary directory (C:\Downloads\temp in our example).

This example is based on R2015, 64b edition, it is the same process for any other version and for 32b.



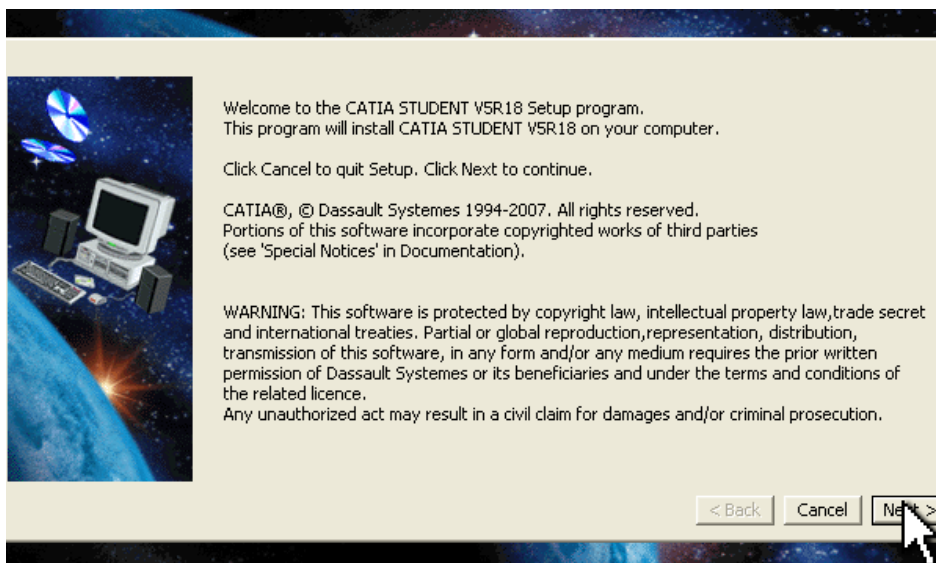
NB: CATIA V5 Student Edition install package is composed of only one ZIP file. The Documentation install package must be used separately.

Extract the zip file in the current folder. Then, double click on “Setup.exe”



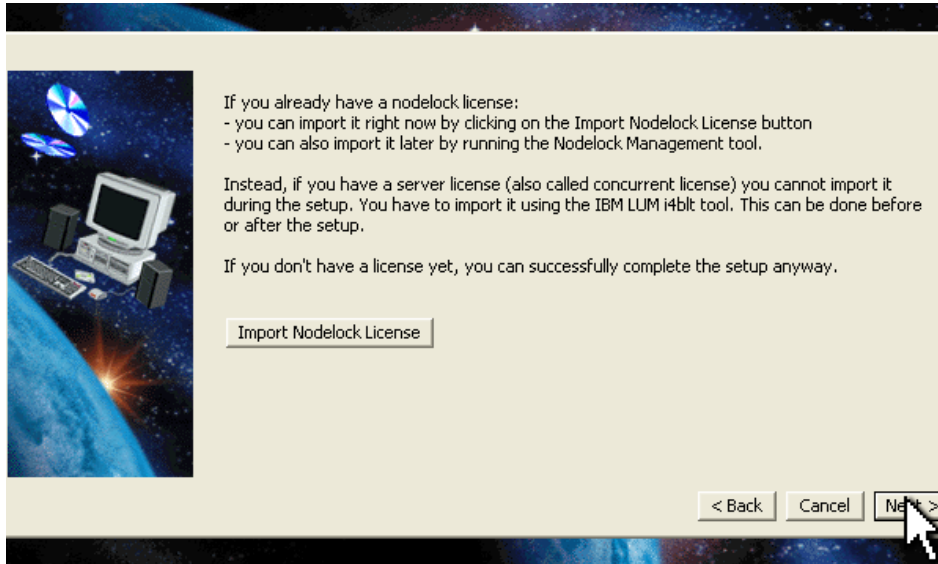
2) [Welcome screen](#)

Press “Next”



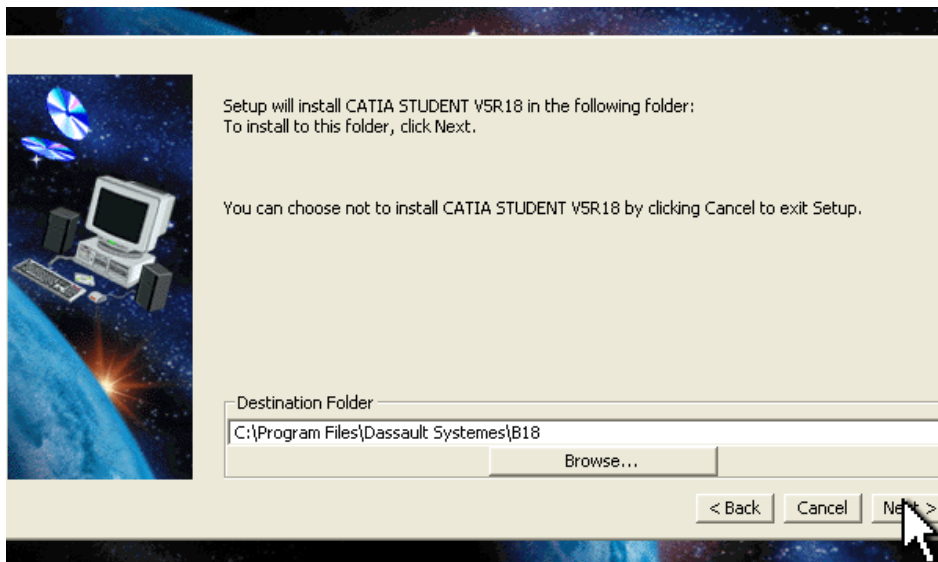
3) License

You will import the license key later on, using the Nodelock Management tool. For now, press *Next*



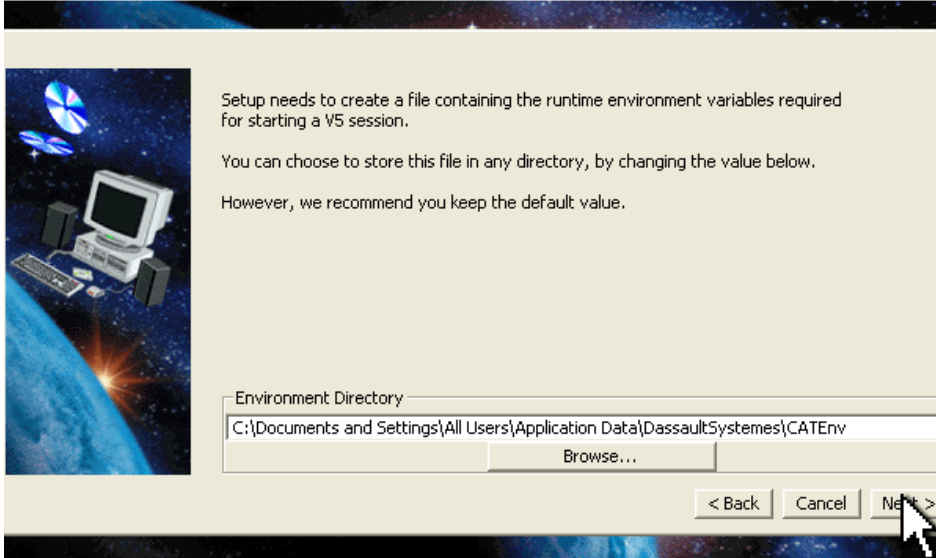
4) Installation Directory

Choose the directory where CATIA V5 data will be copied. Around 2Gb are necessary. We recommend using the default location. Press "*Next*".



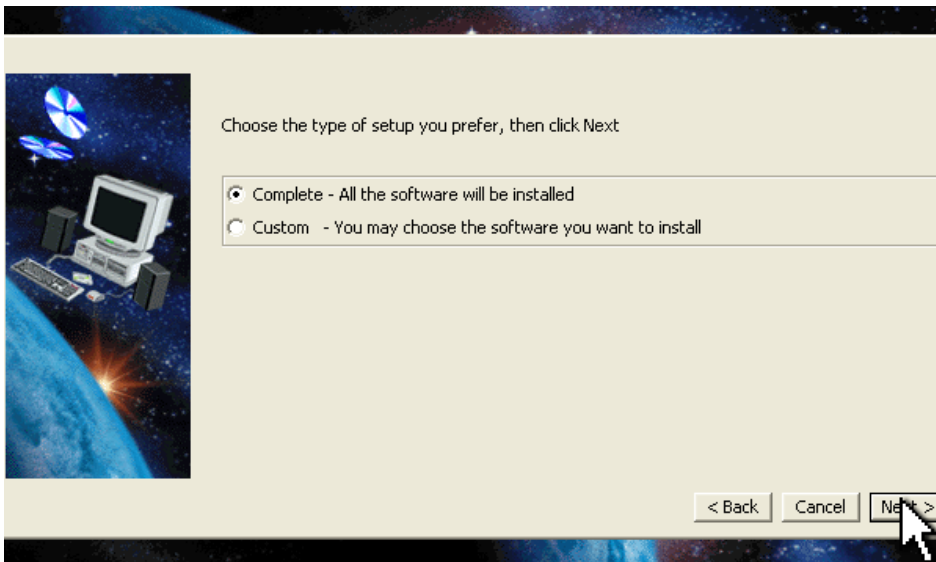
5) Environment

Setup needs to create a file containing the runtime environment variables required for starting a CATIA V5 session. We recommend you keep the default value. Press "Next".



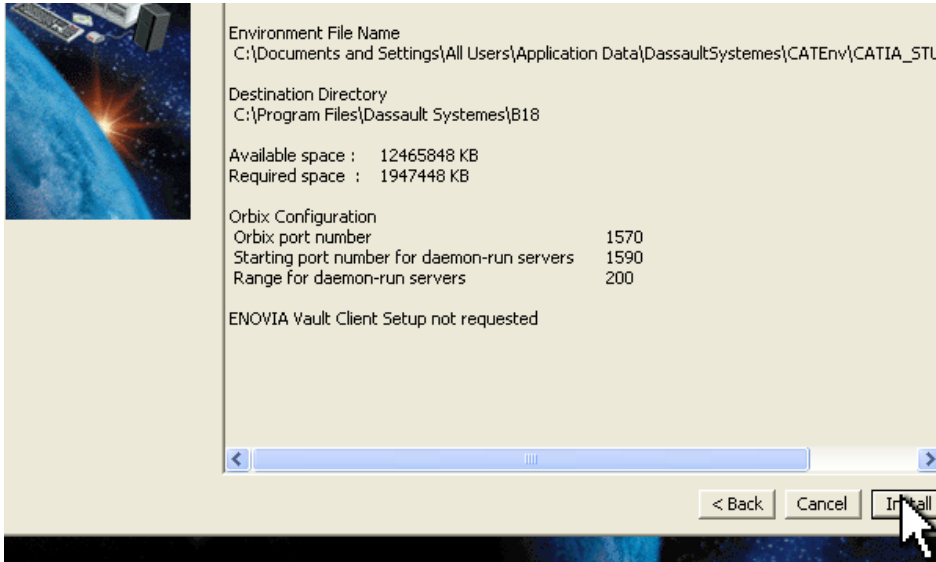
6) Setup type

Pick "Complete" and press "Next".



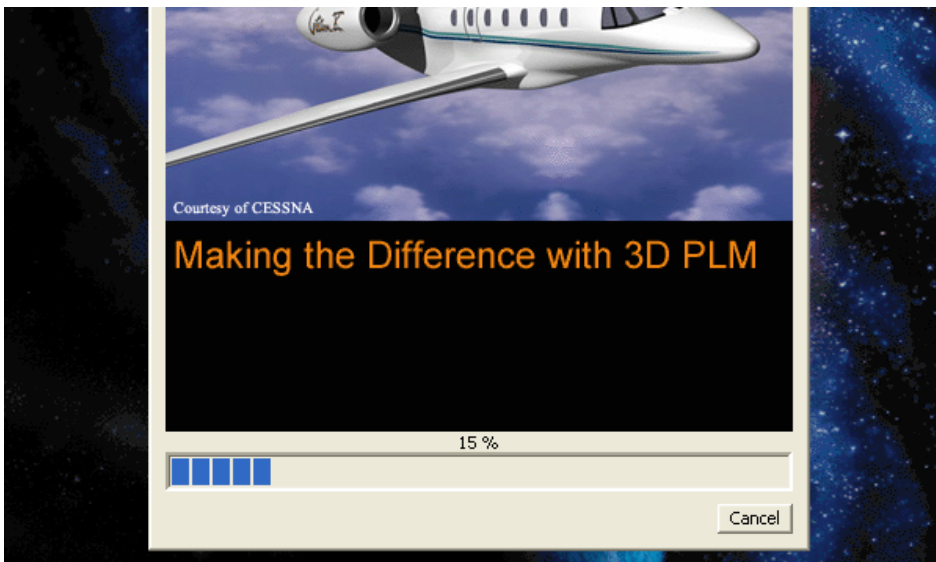
7) Press Next until you get a recap

This screen summarizes the different options that you selected. Press "Next" to start the installation.



8) Installation in progress

Wait until all the data is copied to your hard drive.



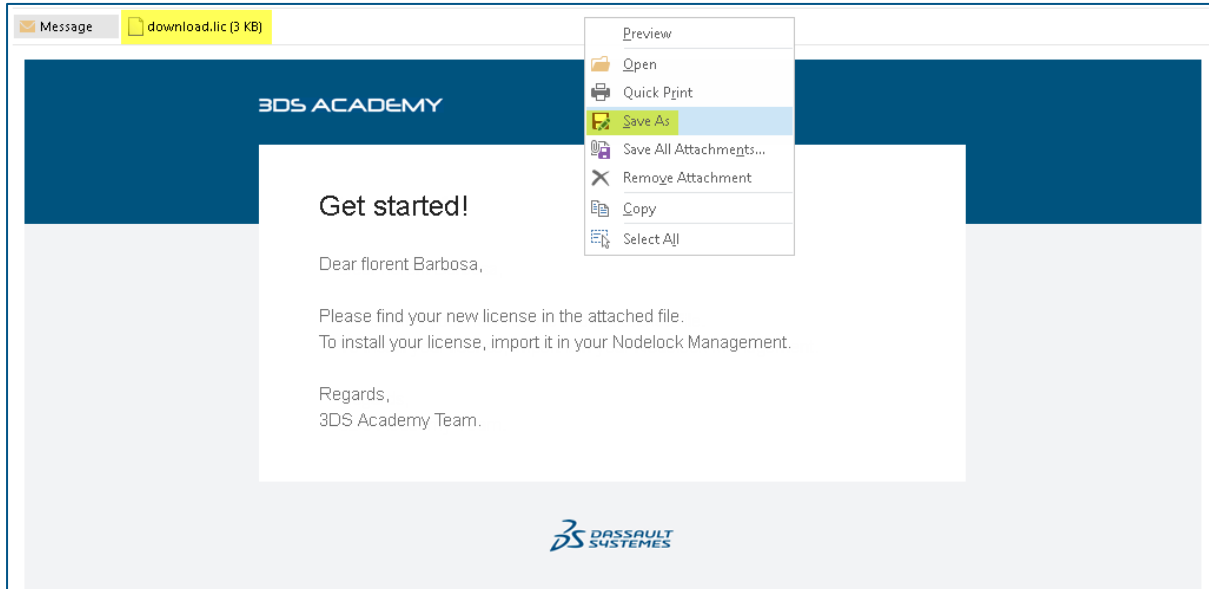
Installation is now over.

To finalize it, you now have to import your license. Follow step **8.Licensing** at the next page.

8. LICENSING

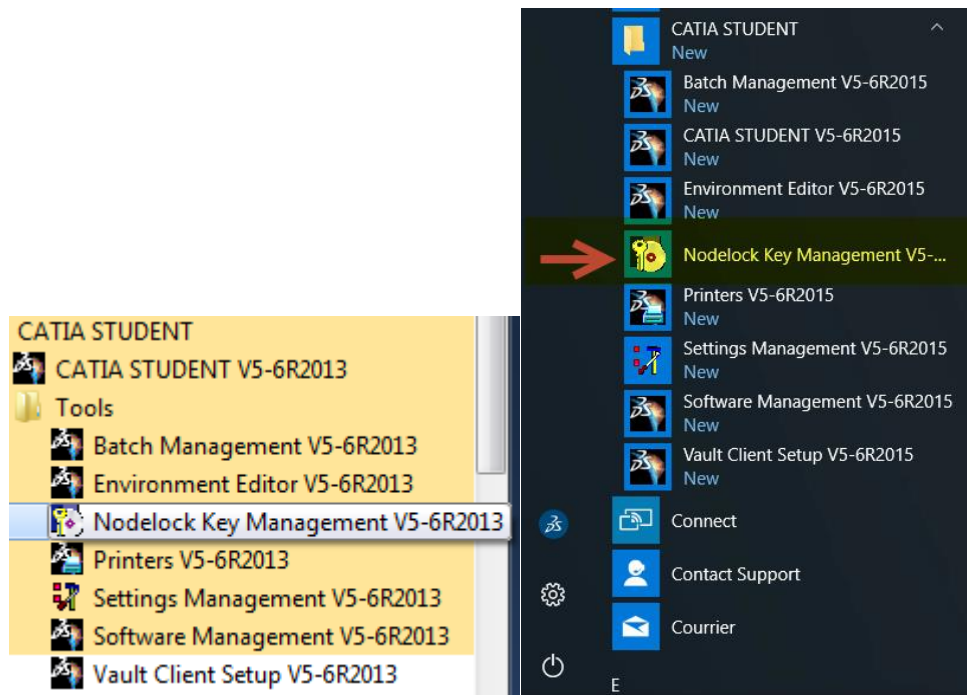
→ Import the license key received by email

Save the .LIC file received by email in a temporary directory



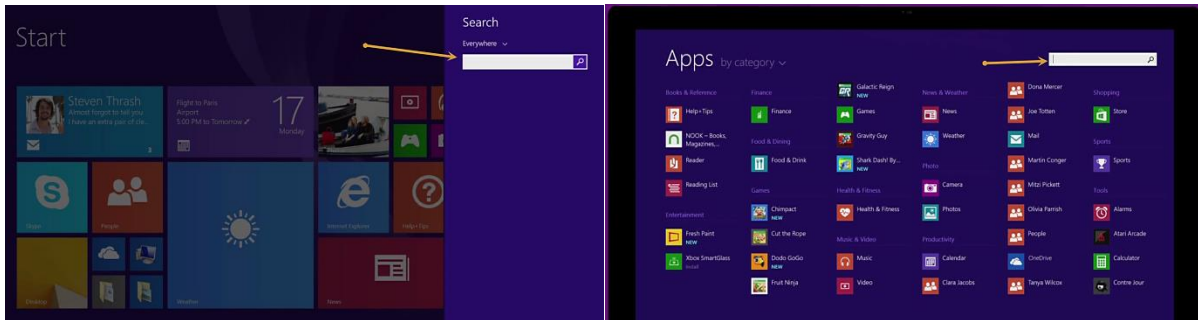
[Windows XP, Vista, Windows 7] From the Windows start menu, select:

- Start > All Programs > CATIA STUDENT > Tools > Nodelock Key Management V5-6R20xx
- For **[Windows 10]**, > CATIA STUDENT > Nodelock Key Management V5-6R20XX



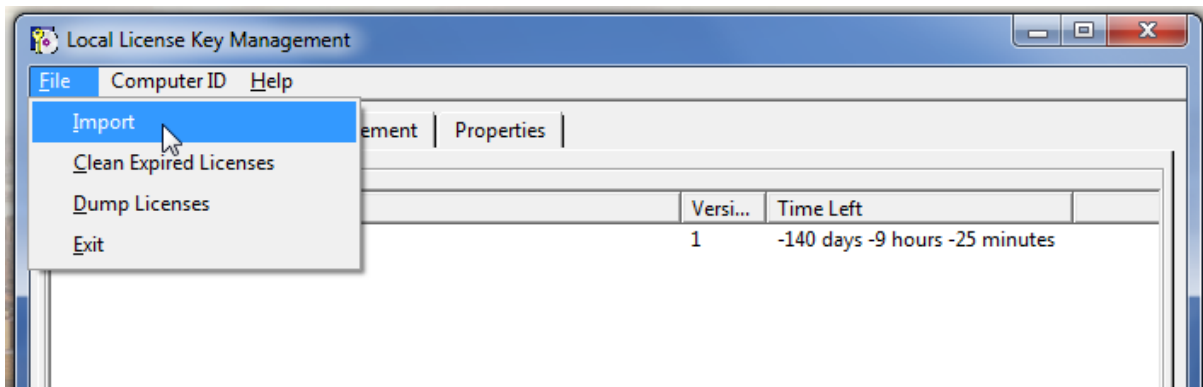
Cannot find Nodelock on Windows 10? Please check E.8 “You cannot find Nodelock Key Management”

[Windows 8] Use the search button (available in the “Charm Bar” or in the “Apps Menu”) and type “Nodelock Key Management” to find it



Use the menu to select:

File > Import



Pick the .LIC file you previously saved on your hard drive. Your CATIA Student Edition license (CS1) should appear in the list after the import.

You're done!

Congratulations! You are now done and you may now shape your ideas in 3D. Enjoy CATIA V5.

9. FREQUENTLY ASKED QUESTIONS (FAQ)

A. Registration and Ordering

1) [In which countries is CATIA V5 Student Edition available?](#)

CATIA V5 Student Edition is available **Worldwide** except countries embargoed and sanctioned countries or for legal reasons (including Puerto Rico).

2) [What are the conditions for eligibility?](#)

To purchase either CATIA Student Edition, you must be a student.

By student, we mean: an individual, REGULARLY ENROLLED IN AN ACADEMIC PROGRAM FOR HIS/HER PERSONAL LEARNING excluding any other purposes such as but without limitation any direct or indirect industrial, commercial and/or business purposes.

Participants enrolled in professional training programs are in particular not eligible.

<https://swym.3ds.com/#community:514/questions:11791>

3) [How long does it take to get approved?](#)

Requests are reviewed from Monday to Friday (10am-5pm).

Expect from 1 to 5 business days to get approved by our teams. To save time and to avoid back and forth emails, be sure to provide us with a valid proof of academic status (see paragraph 4)).

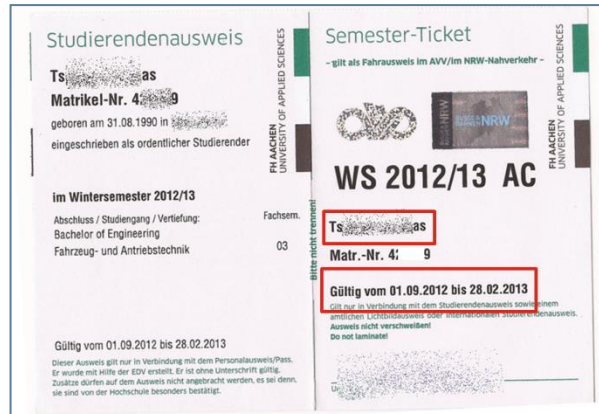
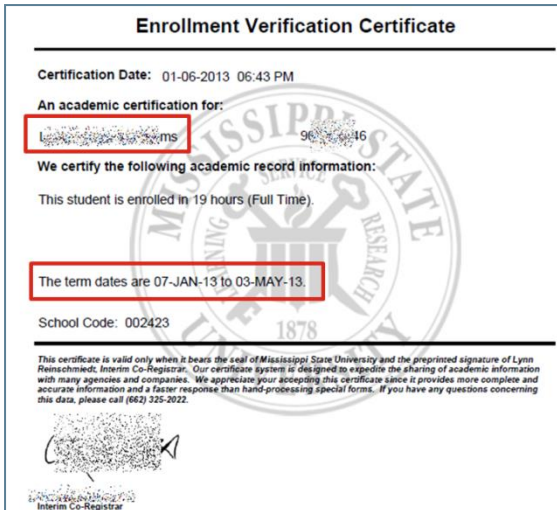
<https://swym.3ds.com/#community:514/questions:11860>

4) [Which proofs of academic status are requested to apply for CATIA Student Edition?](#)

Acceptable forms of academic IDs are the following (only one is required):

- Scan of a **dated** and valid student ID
- Scan of a registration receipt for the current semester/year.
- Scan of a **dated** letter of enrollment on school letterhead for the current semester/year.

Examples:



<https://swym.3ds.com/#community:514/questions:11792>

5) [What is the license duration?](#)

The license will expire one year after the payment.

6) [What is a promo code?](#)

In the Order Summary (at the Billing Step, before the Payment), you can use a promo code if you have one.



A promo code is used to apply discount rates during special marketing operations (we may offer free licenses during events for example). If you didn't receive a code from us, let the field empty while ordering.

<https://swym.3ds.com/#community:514/questions:11824>

7) [Which payment method can I use to purchase CATIA Student Edition?](#)

Credit card and PayPal are accepted to process student edition orders.

<https://swym.3ds.com/#community:514/questions:11803>

8) [How to determine if my operating system is 32 or 64-bit?](#)

Please read the corresponding Microsoft knowledge base article at <http://support.microsoft.com/kb/827218>

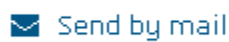
9) I didn't receive the license key by email

You should receive your license key in less than 30 minutes. The message contains a ".LIC" file attached. It is sometimes considered as junk mail by Outlook, Gmail, Yahoo, Hotmail, etc. Please double-check in the corresponding folder. For example, should you use Gmail, the "SPAM" folder is accessible from the left menu:



Still can't find the message? You can request again the email with your .Lic (license) file in your Download Center: go to your Download Center, select CATIA Student software and go directly to Step 2, B/ you should see the following:

You need your license key again?

 Send by mail

→ Email will be sent on the first email address added when you created your account (can be your personal email address if you used it before confirming your account with the student email address).

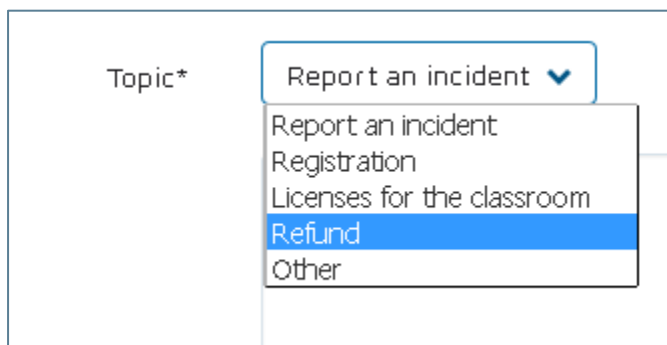
Still stuck? Please open an iQuestion on our community website.

B. Request a refund

To request a refund, please use the dedicated form "3DS Academy website" available on our website.

https://academy.3ds.com/en/contact/contact_us

Choose the topic: "Refund" as shown below



Topic*	Report an incident ▼
	Report an incident
	Registration
	Licenses for the classroom
	Refund
	Other

C. Request a License transfer (changing computers)

I have changed my computer, how to adapt my license on it? You have to determine your new TARGET-ID and modify it in your download Center (license transfer):

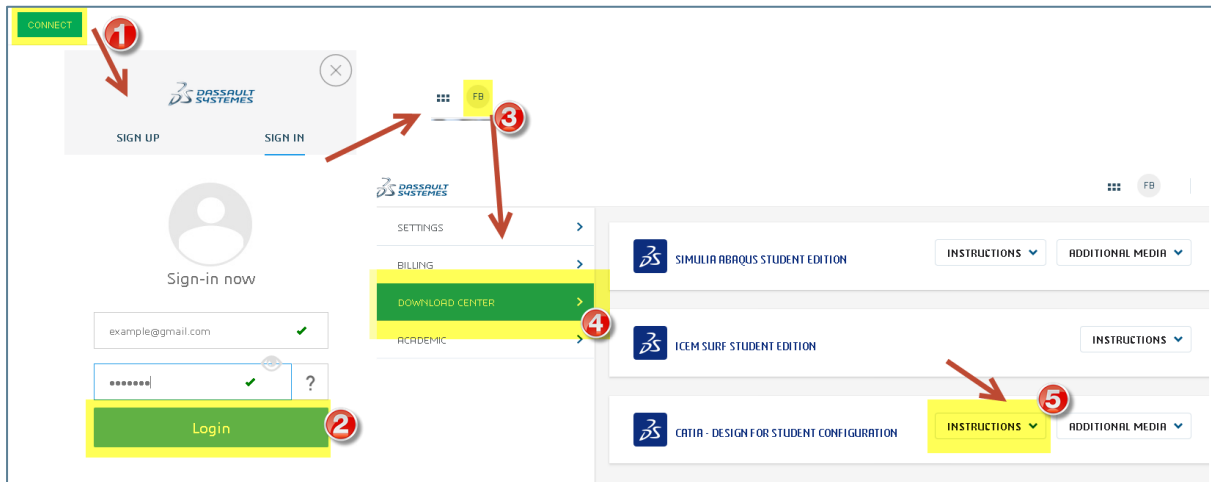
To request a license transfer, you have to

1- Generate the new TARGET-ID corresponding to your new machine (please refer to the TARGET-ID article in *6-Download*) and get ready to paste it.

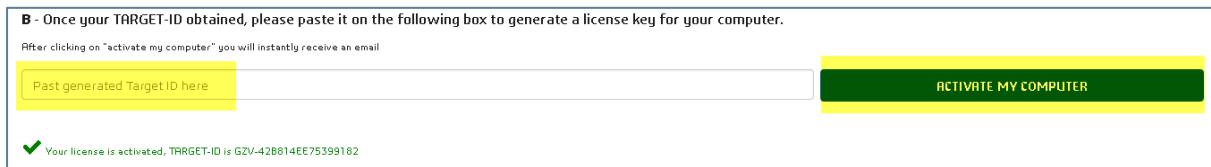
2- Go to your Download Center.

→ To access it, first click on **CONNECT** at the top of the page (1) → Login (2) → then click on your initials (3) to access to your profile which includes your download center.

Once on your download Center (4), choose CATIA Student Edition Software and click on “Instructions” (5), scroll to Step B



Your license is already activated and your previous TARGET-ID is mentioned in green. To update it, paste your new TARGET-ID in the dedicated field and click on “ACTIVATE MY COMPUTER”. You will receive shortly after an email with your new license (.lic) file based on new the TARGET-ID.

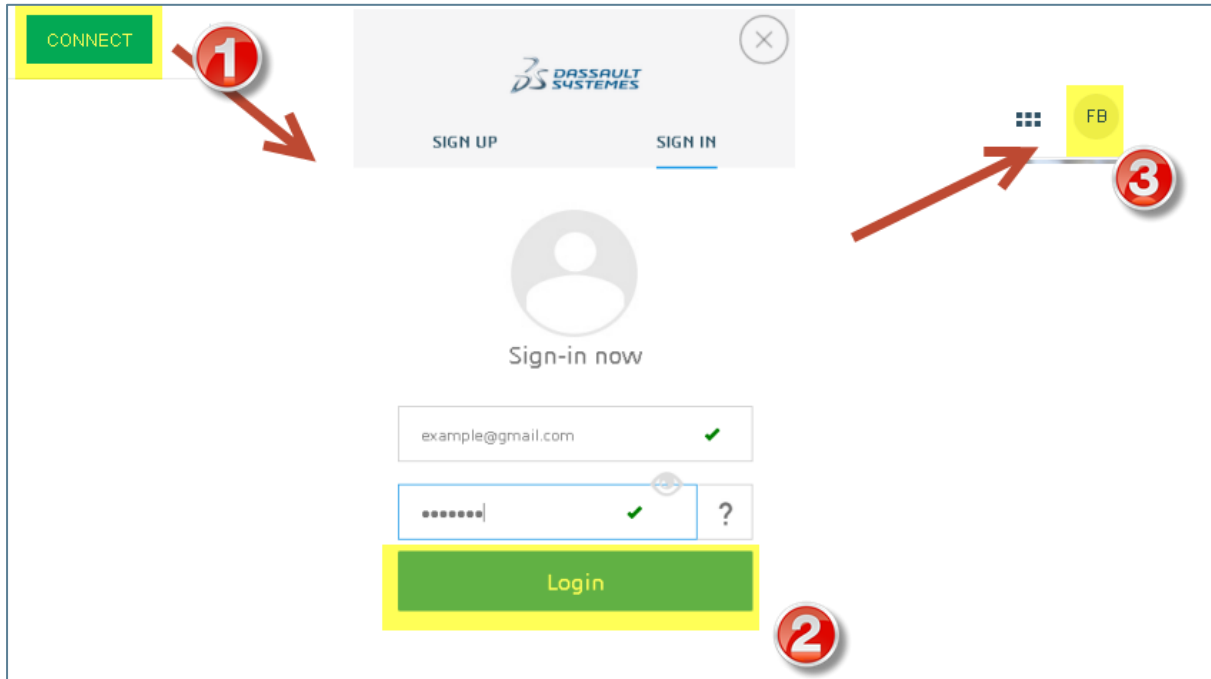


Once your License file (.lic) received, import it in your Nodelock Management to activate it (please refer to the Nodelock Management article in *8-Licensing*)

D. Account and Download Center

1) How to access to your account

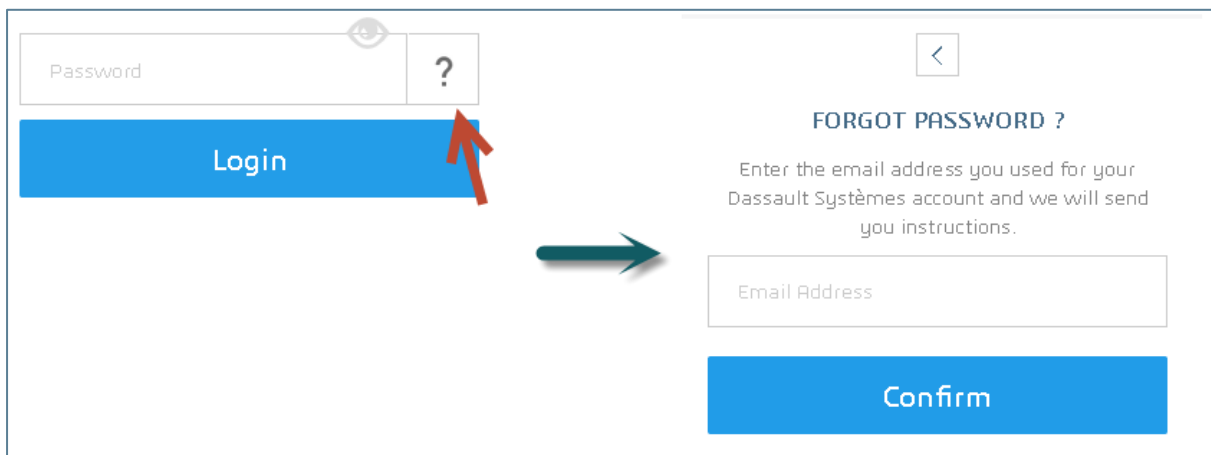
Click on CONNECT at the top of the page (1) → Login (2) → then click on your initials (3) to access to your profile



2) How to reset my profile password?

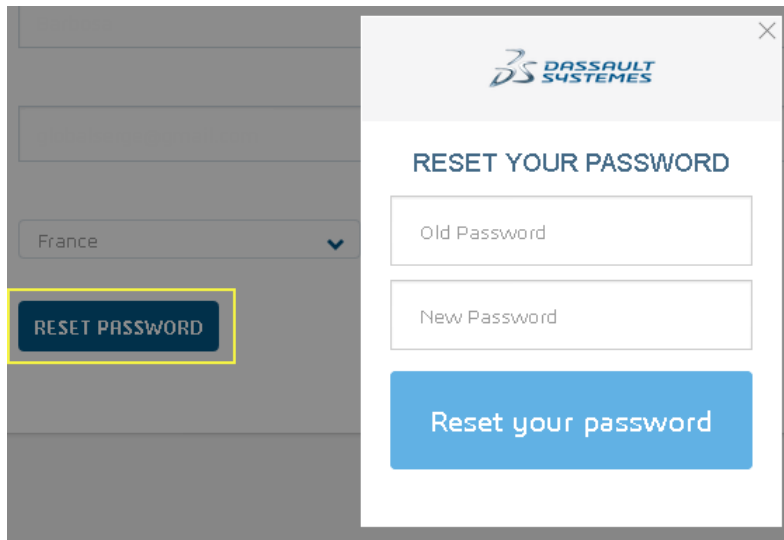
A/ If you don't remember your current password:

→ Click on the CONNECT button on the top bar, then, on the "?" to activate the Forgot Password form




B/ If you remember your password but want to change it:

→ Access to your account (CONNECT > Login > click on the top circle with your initials), in the Settings tabs, you have your personal information, click on the “Reset Password” button.

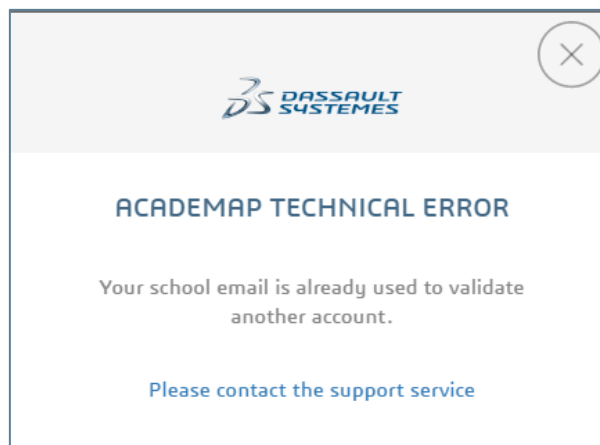


3) [I need an invoice \(billing\)](#)

Connect to your Download Center (in my Account) and to the “BILLING” tab. Click on the cloud icon on the desired software and an INVOICE .pdf will open.

DATE	ID	STATUS	SOLUTION	TOTAL	INVOICE
October 18, 2016	██████████	PAID	CATIA - Design for Student Configuration	██████████	

4) [I have the error “ACADEMAP TECHNICAL ERROR Your school email is already used to validate another account”](#)



This error happens because you probably have already created an account with your

academic email address.

Please login using this academic email address instead of creating another account.

If you don't remember your password, please use the reinitialize function.

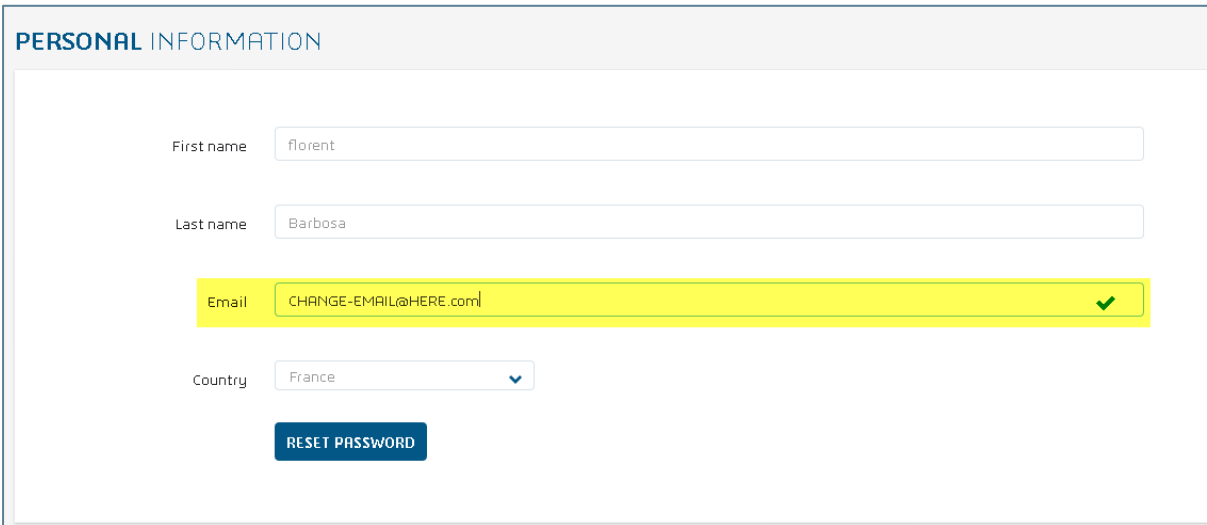
If these solutions don't help, please contact us.

5) [I have misspelled my email when registering](#)

If you put a wrong email during the registration process, you can still modify it after.

Connect to your account (with the wrong email address) and go to personal information.

You can see an email field (as shown below), modify your email here. You will receive an email to confirm the modification on your new email address.



The screenshot shows a 'PERSONAL INFORMATION' form with the following fields:

- First name: florent
- Last name: Barbosa
- Email: CHANGE-EMAIL@HERE.com (highlighted in yellow with a green checkmark)
- Country: France (dropdown menu)

A 'RESET PASSWORD' button is located below the form.

If you also request again the license, it will be sent on this new email address.

If it doesn't work, please contact us directly and we will modify your email address.

Don't forget to precise the wrong email address and the correct one.

6) [Order delayed : need more information \(by email, order in hold\)](#)

You received the following email: "ORDER DELAYED" Your order is currently in hold, we need additional information from your part"

To approve your order, you have to send the following additional information: date of birth + order number (visible in the email) to 3ds.compliance-export@3ds.com

Note: This email is linked to legal obligations: *As a global company with operations and customers around the world, DS must comply with the export laws and regulations of the numerous countries in which it does business, including those of the United States, as well as any export restrictions imposed by international, multilateral institutions. As a result of these legal obligations and limitations, we have sometimes to verify student profiles to approve orders.*

7) [How to download the software later or change your release](#)

To access to your software again, you have to go to the Download Center, to access it, first click on CONNECT at the top of the page → Login → then click on your initials to access to your profile which includes your download center.

Once on your download Center, choose CATIA product: you can download your software again and change the release if required.

Note: to change your release:

a/ Download the new release you want in the Download Center (R2013, R2014, R2015...).

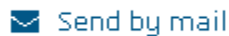
b/ Uninstall your current CATIA V5 Student Edition

c/ install the new CATIA V5 release

d/ Import the .lic (license) file received with your first install in your Nodelock Management and you're done.

If needed, you can download again the .lic file in the download center: at Step 2, B

You need your license key again?

 Send by mail

E. Installation and TARGET-ID

1) [Error: "setup Problem with VC8 Runtime. Please try to restart your computer or contact customer service"](#)

This error message is generated immediately upon the completion of the Dassault Systemes Software Prerequisite x86 installation, at the beginning of the CATIA V5 client installation.

It is misleading: probably nothing is wrong with the C++ version installed on your computer. For example, Microsoft Visual C++ 2005 Redistributable Package (also known as "VC8").

This error may be caused by a corrupted CATIA installation package, or a non-complete CATIA V5 or CATIA V6 code installation package. It will be generated if parts of the installation code are incomplete or became corrupted during the download or decompression.

To ensure that the installer is downloaded and managed properly and to avoid code corruption:

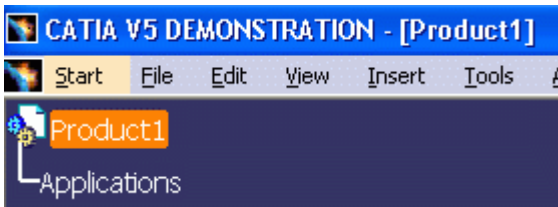
- Make sure that the ZIP file download is finished before unzipping (see table below)
- Uncompress it again using **7Zip**, **WinZip** or any efficient uncompression tool and try to run a new installation

You can find on the table below the precise file size of each CATIA Student Edition version:

CATIA version	File name	Expected file size
V5-6R2016 64-bit	V5-6R2016.CATIA_STUDENT.win_b64.1-1.zip	985 MB
V5-6R2015 64-bit	V5-6R2015.CATIA_STUDENT.win_b64.1-1.zip	941 MB
V5-6R2015 32-bit	V5-6R2015.CATIA_STUDENT.intel_a.1-1.zip	860 MB
V5-R2014 32-bit	V5-6R2014.CATIA_STUDENT.intel_a.1-1.zip	863 MB
V5-R2014 64-bit	V5-6R2014.CATIA_STUDENT.win_b64.1-1.zip	930 MB
V5-R2013 32-bit	V5-6R2013.CATIA_STUDENT.intel_a.1-1.zip	868 MB
V5-R2013 64-bit	V5-6R2013.CATIA_STUDENT.win_b64.1-1.zip	935 MB

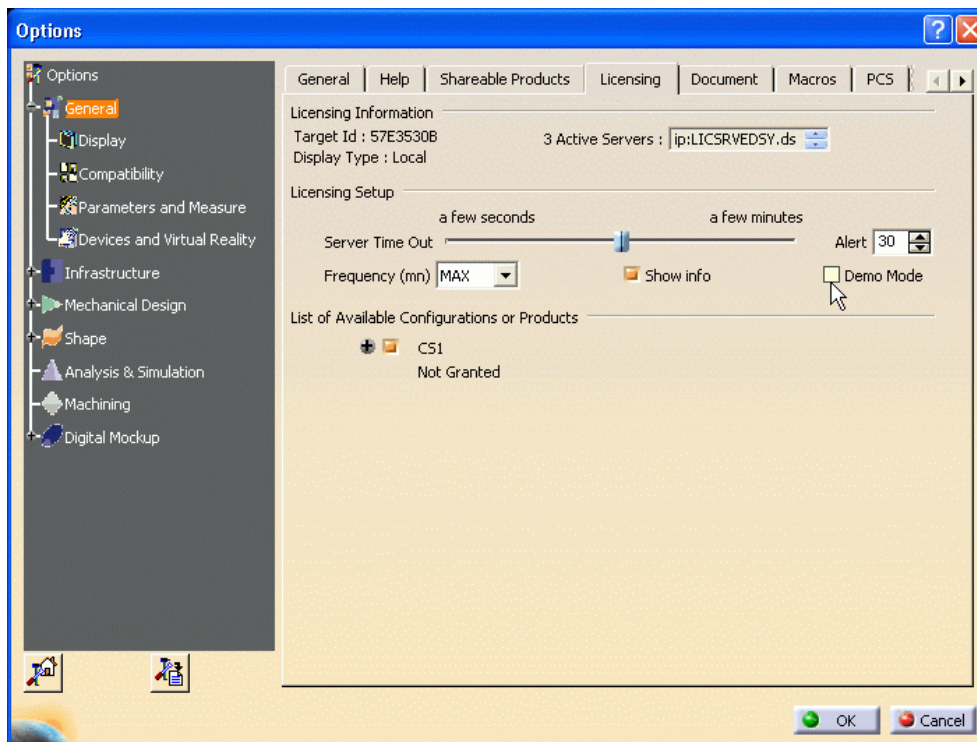
<https://swym.3ds.com/#community:514/questions:14689>

2) CATIA title bar show "CATIA V5 DEMONSTRATION"?



You probably checked the "demo" mode by mistake.

To fix the problem: → Select "Tools" > "Options" from the menu → Select the "Licensing" tab (as shown below) → Uncheck the demo mode



You will be asked to restart CATIA V5. Once done, you should see "CATIA V5 for Student" in the CATIA title bar.

<https://swym.3ds.com/#community:514/questions:11829>


3) [You cannot find Nodelock Key Management](#)

If you cannot find your “Nodelock Key Management”, you can launch the tool directly from the installation directory of CATIA Student Edition. The default location of the program is :
"C:\Program Files\Dassault Systemes\Bxx\win_b64\code\bin"

(where "Bxx" is the release number of CATIA. For Ex: It is "B25" if you have V5-6R2015 level installed, "B24" if you have V5-6R2014 installed).

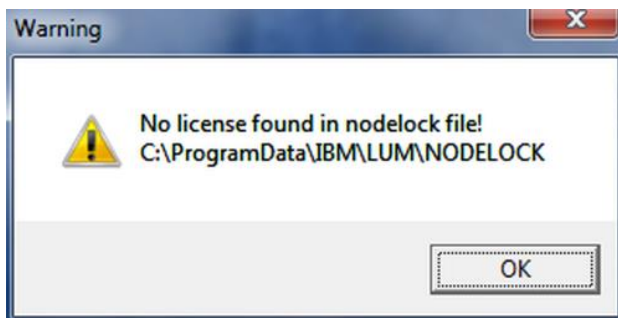
If you have installed CATIA in another folder or drive, please modify it consequently.

In "bin" folder search for "DSLicMgt.exe" and double click on this "DSLicMgt.exe".

Nodelock Key Management tool will be launched. 

4) [No license found in nodelock file](#)

Some users get the following error message: "No license found in nodelock file! C:\Program Data\IBM\LUM\NODELOCK" when they run the LUM license manager:

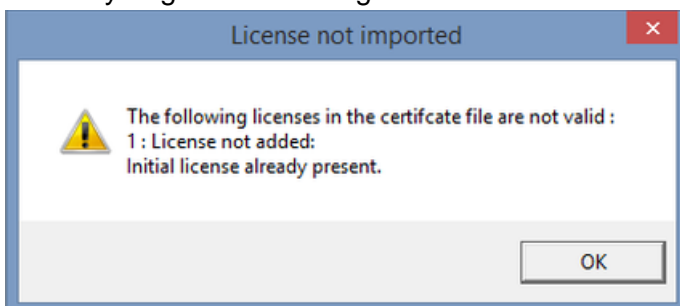


It means that so far there is no license listed in the file named "NODELOCK". This is normal, as no license key has been imported until now.

<https://swym.3ds.com/#community:514/questions:14291>

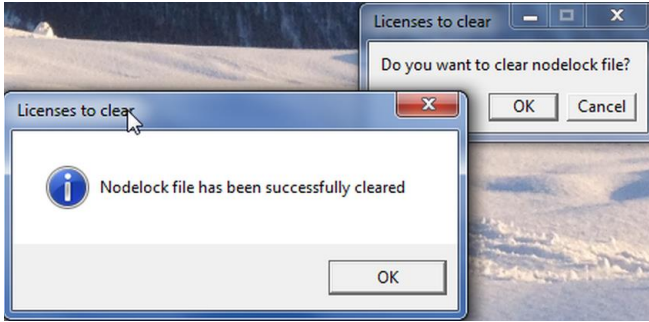
5) [License not imported. Initial license already present](#)

Should you get the following issue:



Your might have already used another CATIA version.

In that case, launch your Nodelock Key Management, go to “File” and click on “Clean Expired Licenses”

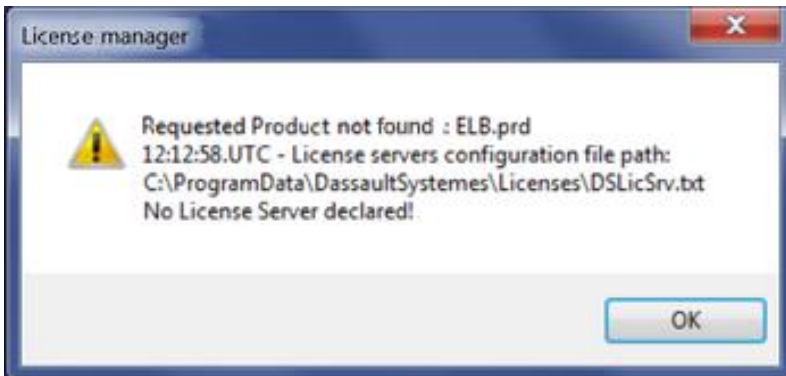


If the problem remains, your Nodelock file might be corrupted.

Please delete the “Nodelock” file located in C:\ProgramData\IBMLUM (ProgramData is a hidden file, to show it, go on “organize” > “folders and search options” > “view” > select “Show hidden files, folders, and drives”). Then, import your license file again. You can also try the solution [10) You have not requested...] if the issue persists.

<https://swym.3ds.com/#community:514/questions:21540>

6) Requested Product not found: XXX.prd or XXX.slt



If you obtain the following error with a .slt or .prd at the end of the message (examples: _MS2.slt, ELB.prd...), you have probably installed another CATIA on your computer that was not a CATIA Student Edition and have probably some remaining licensing information from this previous install stored on your machine.

→ You need to clear your CATIA settings (CATSettings) and then restart CATIA to avoid these warning messages.

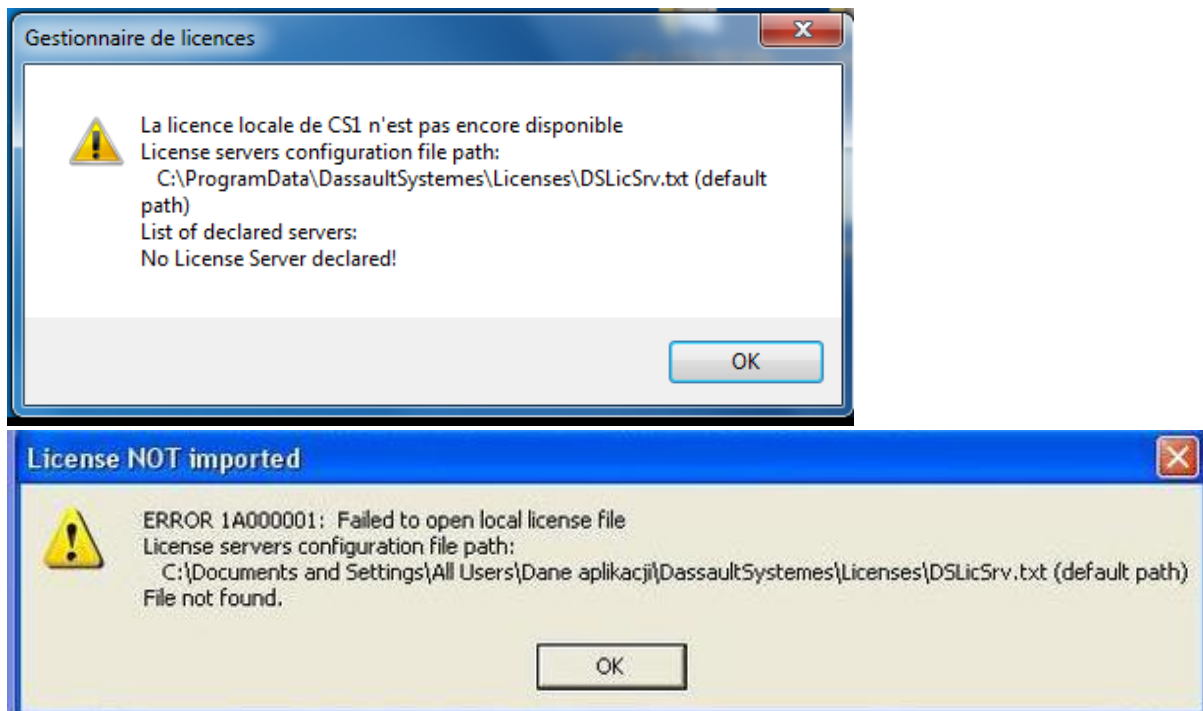
By default CATSettings are generated in folder:

C:\Users\user\AppData\Roaming\DassaultSystemes\CATSettings

You need to delete all settings (CATSettings) present at above location and Import your license into "Nodelock Key Management" tool. Then, restart CATIA.

To know more information about CATSetting you can refer documentation path: CATIA Infrastructure > Customizing > Customizing Settings > About Settings > Where Are Settings Files Located on Windows?

- 7) You have imported your license but can't see it in Nodelock or have the following issues: "No license server declared" or "Failed to open local license file"



When the import is successful, the license copy is created under the folder
C:\ProgramData\DassaultSystemes\Licenses (ProgramData folder is hidden)

Please first check that this path exists on your computer, if not, launch again TIGER (Target-ID Generator) application in admin mode to set up the environment (if it doesn't work, you can create the "Licenses" folder manually).

Then, check if you have the license file (.LIC) generated at above location after importing it in Nodelock Tool. If it is not present in the folder, paste manually the .LIC file that you have received into above folder and then try to start CATIA

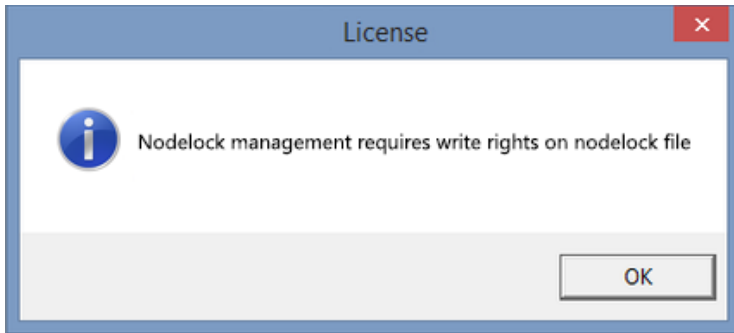
→ If you still have the issue:

In the same folder (licenses): check if you already have a text document: DSLicSrv.txt

- If you don't have one, please create a blank document with the following name "DSLicSrv.txt" in the folder.

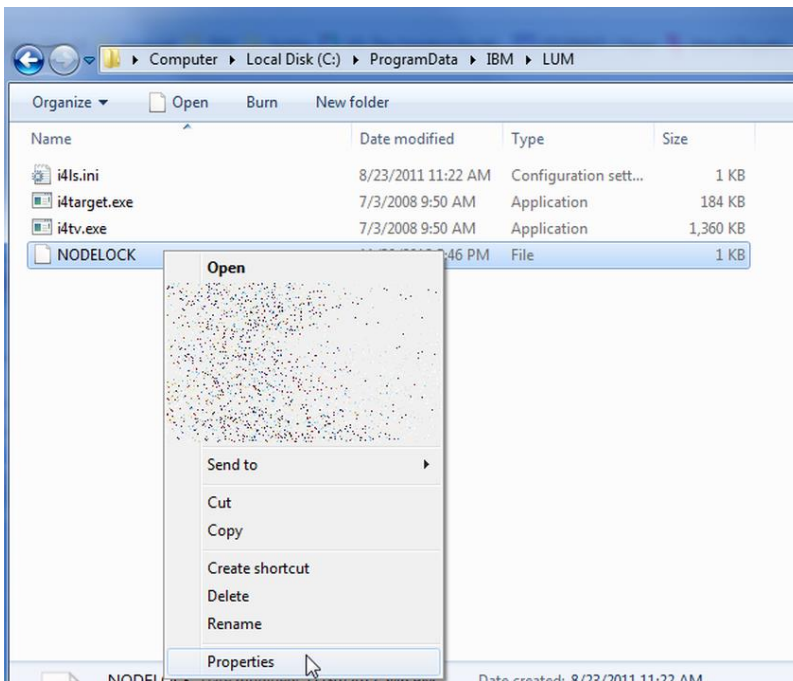
- If you already have this document, please rename it into DSLicSrv.txt.old and then create a new blank document DSLicSrv.txt which will replace the old one.

8) Nodelock management requires write rights on Nodelock file

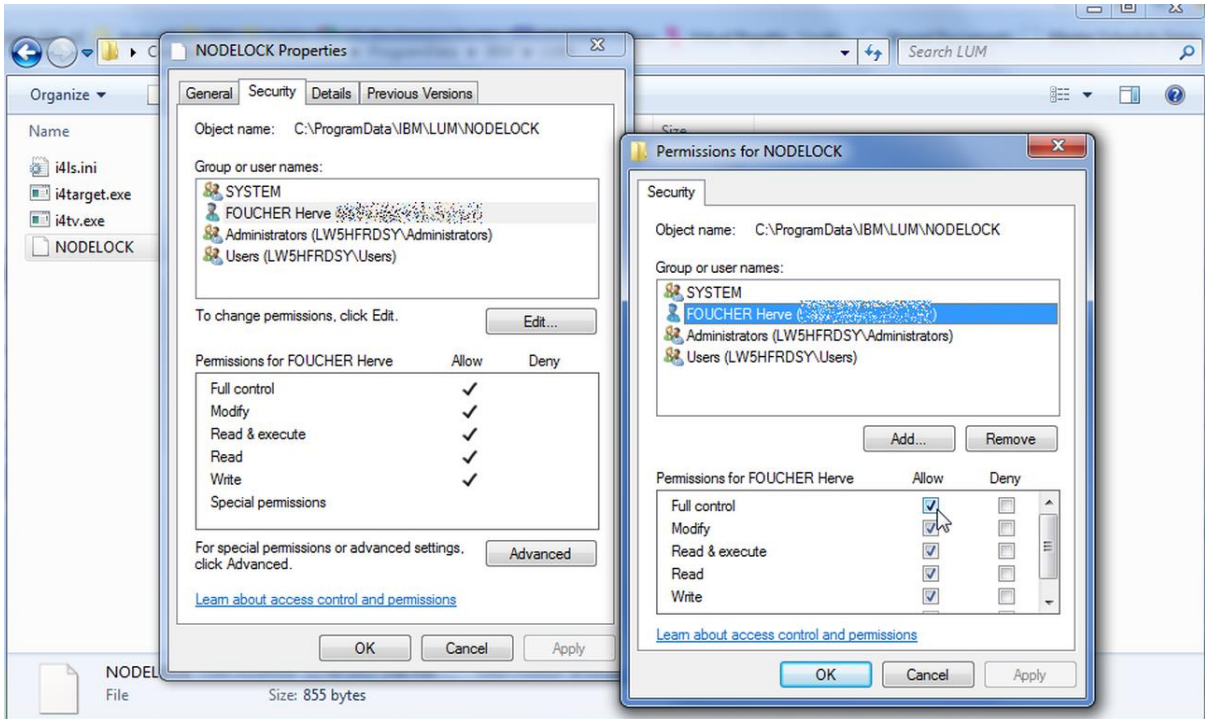


To fix this issue:

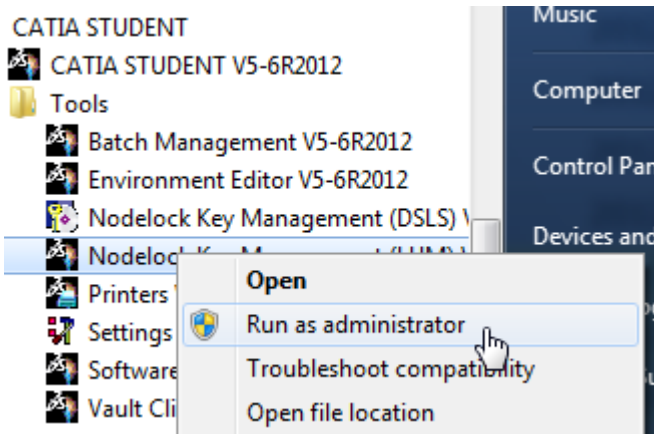
a) Either browse C:\ProgramData\IBM\LUM and right click on the NODELOCK file. Select "Properties" as shown below:



Then, open the "Security" tab, then "Edit" and make sure your Windows user (or even better: "Everyone") gets "full control" rights:



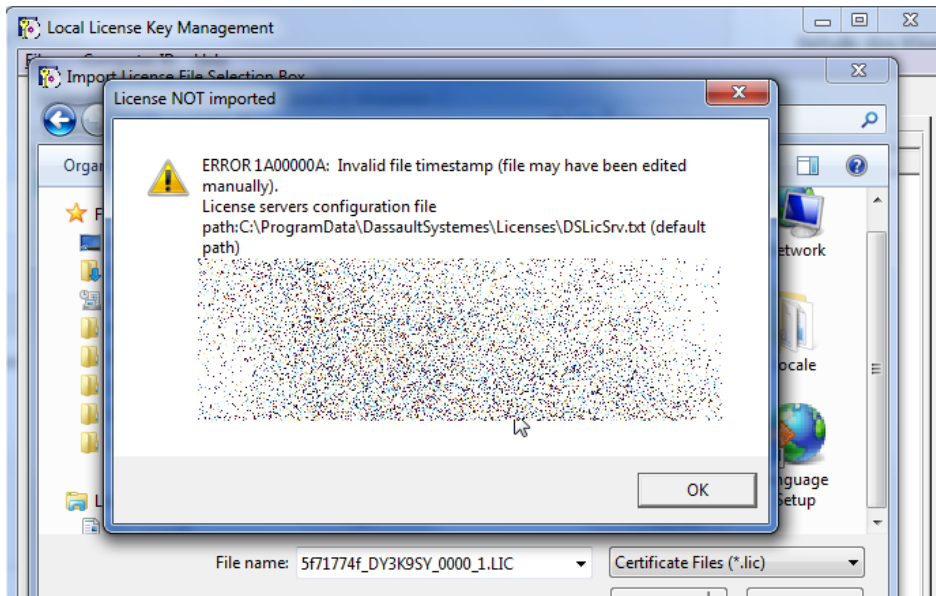
Or b) run the Nodelock Management tool as an administrator (right click on the menu entry as shown below)



<https://swym.3ds.com/#community:514/questions:14291>

9) [Invalid Timestamp Error](#)

You may get an "Invalid Timestamp" error when trying to import your .LIC file.

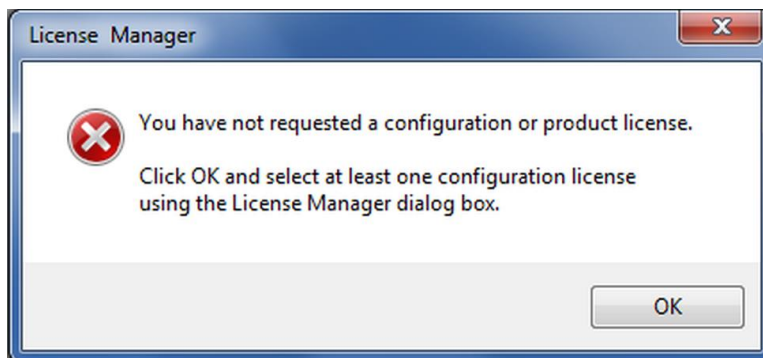


This error occurs when trying to import a LIC file using the **DSLS** License Manager instead of the **LUM** one.

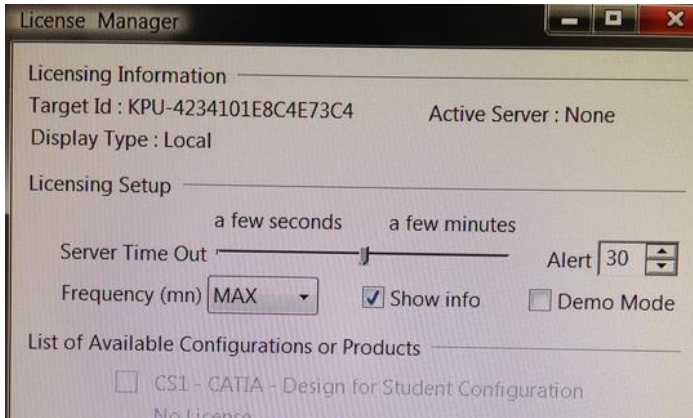
Start the LUM License Manager and import the .LIC file.

10) [You have not requested a configuration or product license](#)

When running CATIA V5 Student Edition, some users get the following error:



Then:

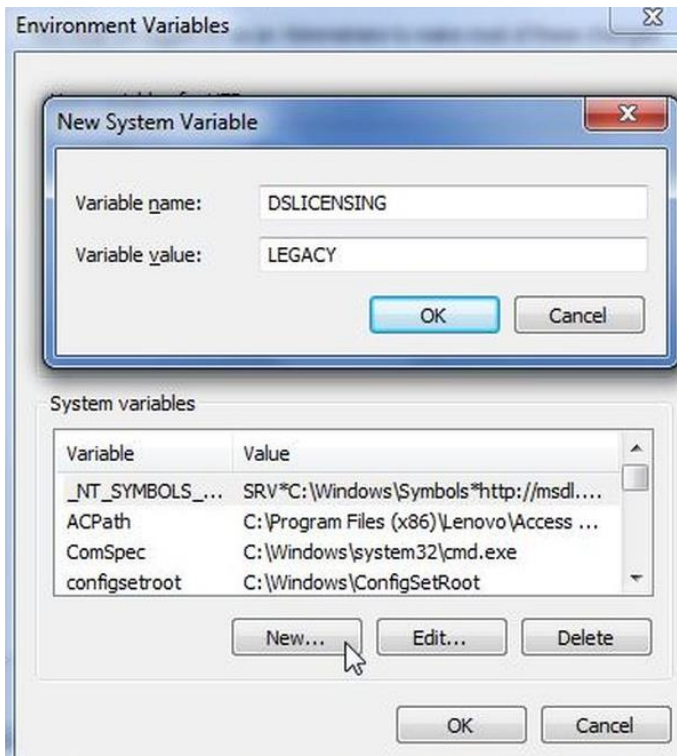


The above screenshot shows that CATIA is linked to the **DSL**S licensing manager instead of the **LUM** one. To fix this issue, run the Target ID Generator again (see paragraph 4)). It will set an environment variable to you.

You may also do it manually (advanced users only):

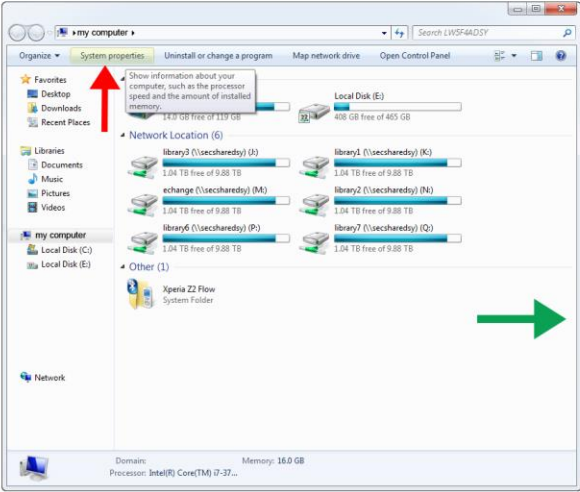
- Open the Windows Control Panel.
- Choose “System and Security” > “System”
- Click “Advanced System Settings”
- Select “Environment variables” in the “Advanced” tab as shown below
- Click “New..” and add a new SYSTEM variable (in ALL UPPERCASE LETTERS, no space between words)

variable name: DSLICENSING
value: LEGACY

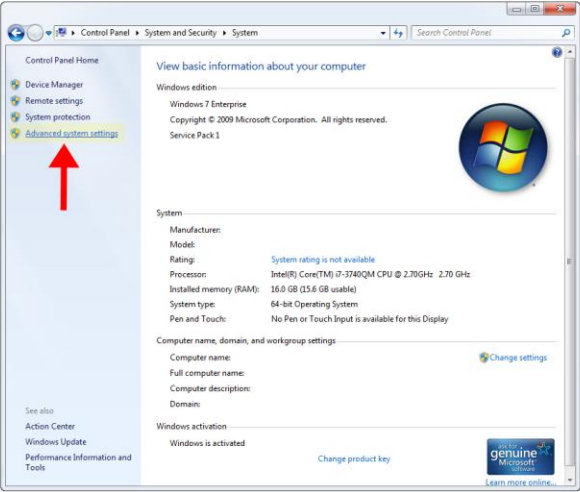


Here is the entire process:

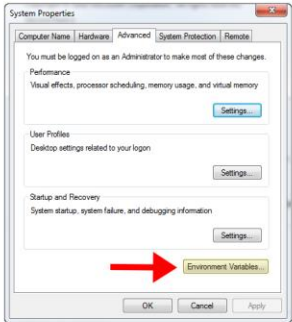
1- Open "Systemes & properties"



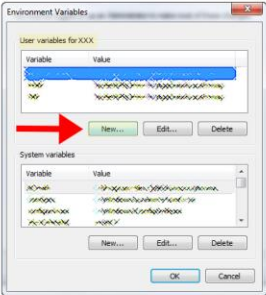
2- Select "Advanced system settings"



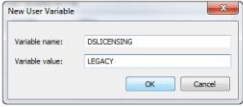
3- Click on "Environment Variables"



4- Go to user variables and click on "New..."



5- Create the variable: Variable name: DSLICENSING Variable value: LEGACY then press OK and close



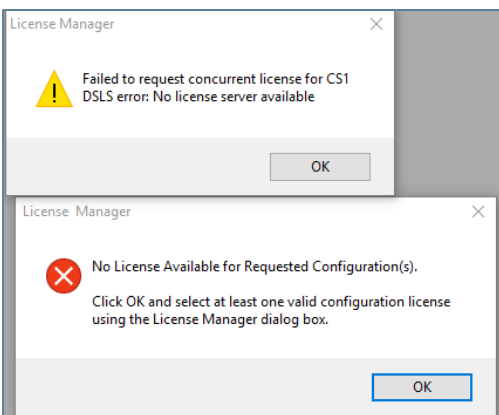
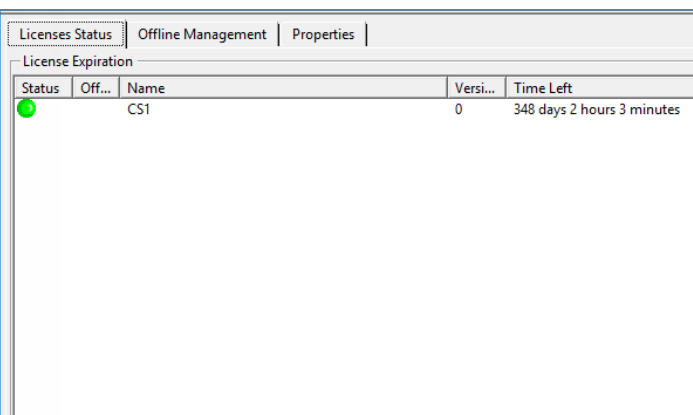
You can now launch CATIA Student Edition

<https://swym.3ds.com/#community:514/questions:12882>

<https://swym.3ds.com/#post:12819>

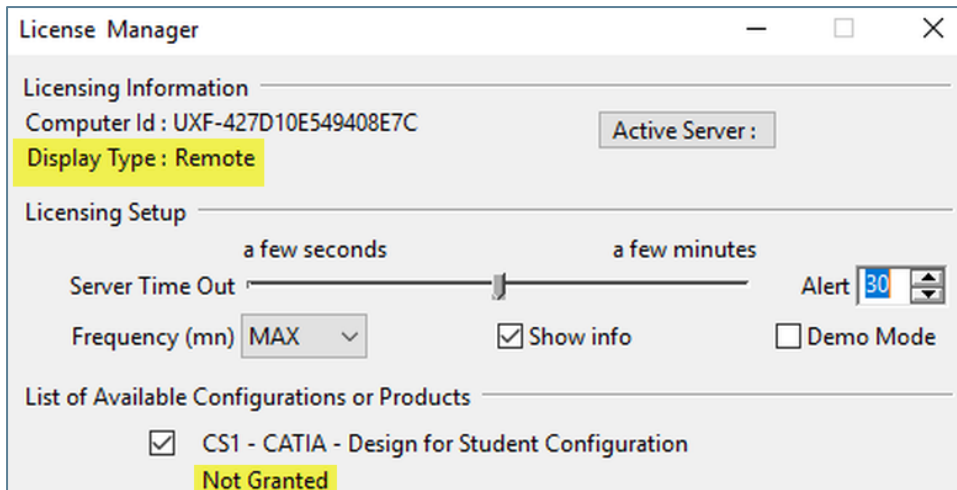
11) No license available for requested configuration – configuration not granted

If you have the following issues:

Status	Off...	Name	Versi...	Time Left
●		CS1	0	348 days 2 hours 3 minutes

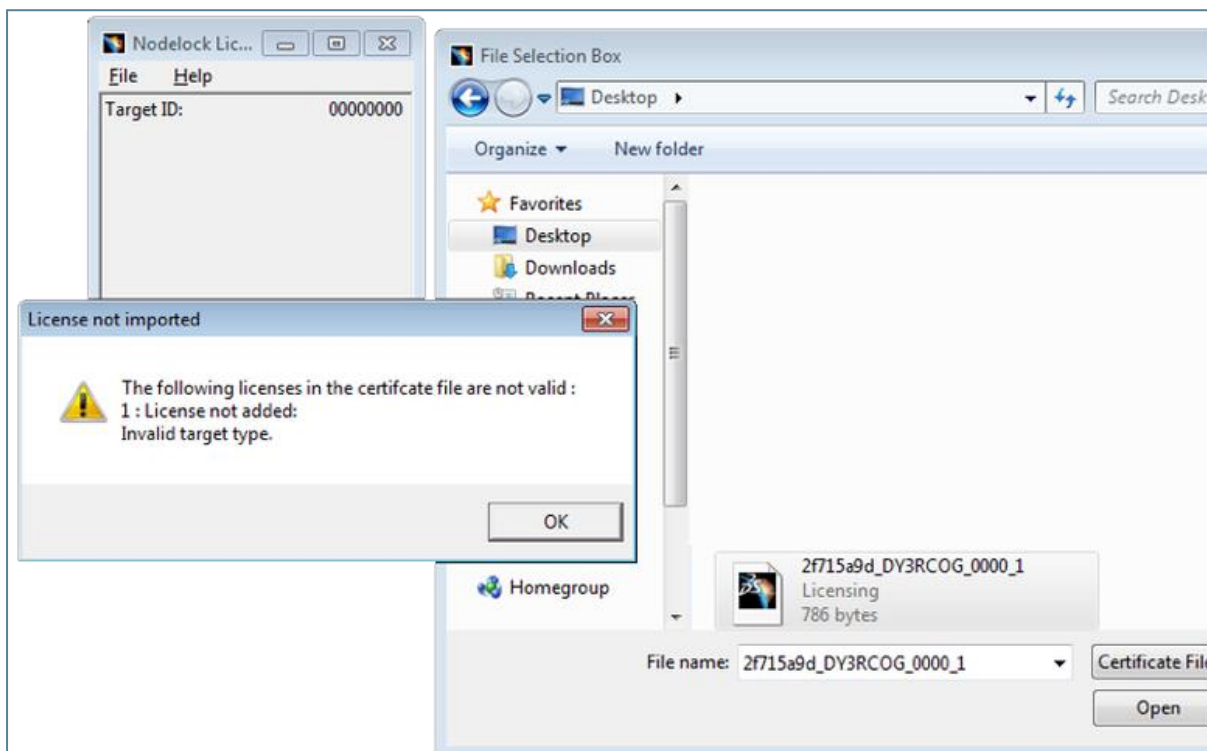
You are probably using CATIA through a Remote Desktop connection. This functionality is not yet supported for CATIA in its student Edition and your license is not detected. To check your display type, you can open your License Manager as shown below:



To avoid this issue, run CATIA from the same machine without remote desktop connection.

12) My Target ID is 00000000

Should you get the following:



Make sure you used the Target ID Generator to determine your Target ID.

If you already did, you are probably running a Virtual machine and CATIA will not work. In this case: a) use a real machine and request a license transfer, or b) request a refund.

<https://swym.3ds.com/#community:514/questions:11798>

<https://swym.3ds.com/#community:514/questions:16165>